



2018 ANNUAL REPORT



"A Year of Service"

Board Meeting
September 27, 2018



Accountability To Our Customers

EPC Division	Agency	Program Name	Audit Type	Audit Result
Administration	Hillsborough County	PCI Compliance	Financial	Satisfactory
Water	Florida Department of Health	Performance Testing Program	Laboratory Testing Accuracy	Satisfactory
Water	Environmental Protection Agency	National Air Toxics Trending Stations	Laboratory Air Monitoring Activities	Satisfactory
Water	Environmental Protection Agency	Performance Testing Program	Laboratory Testing Accuracy	Satisfactory
Air	Florida Department of Environmental Protection	Standard Operating Agreement for air pollution program	Permit writing, compliance and enforcement activities	Satisfactory
Air	Environmental Protection Agency	National Air Toxics Trending Study	Technical Assistance Audit	Satisfactory
Air	Environmental Protection Agency	National Performance Audit Program	Air monitoring performance audit	Satisfactory
Air	Environmental Protection Agency	Lead Performance Evaluation Program	Air monitoring performance audit	Satisfactory
Wetlands	Tampa Port Authority	Minor Works Permit	Permit writing, compliance and enforcement activities	Satisfactory
Wetlands	Florida Department of Environmental Protection	Mangrove Delegation	Permit writing, compliance and enforcement activities	Satisfactory
Wetlands	Army Corps of Engineers	State Programmatic General Permit (SPGP)	Permit writing, compliance and enforcement activities	Satisfactory
Wetlands	Hillsborough County	Development Services	Permitting Comments/Reviews	Satisfactory
Wetlands	Florida Department of Environmental Protection	ERP-Single Family Delegation	Permit writing, compliance and enforcement activities	Comments received and addressed
Waste	Florida Department of Environmental Protection	Petroleum Cleanup Contract	Monthly TATs for report reviews, Oculus documents, database entries	Satisfactory
Waste	Florida Department of Environmental Protection	Petroleum Cleanup Contract	Quarterly audits of work productivity & errors	Satisfactory
Waste	Florida Department of Environmental Protection	Storage Tank System Compliance Verification Program	Annual Program Review	Satisfactory
Waste	Florida Department of Environmental Protection	Florida Brownfields Program	Delegated Program audit	Satisfactory

2018
Audits

EPC's Core Functions

Air & Water Monitoring



Testing water quality



Investigating environmental complaints

Environmental Permitting



Writing effective permits

Citizen Support & Outreach



Checking air quality in Hillsborough County



EPC's Clean Air Fair



Checking water quality at a permitted source

Core Functions (cont.)

Compliance Assistance



Inspecting small businesses



Tanks Compliance Inspection

Enforcement

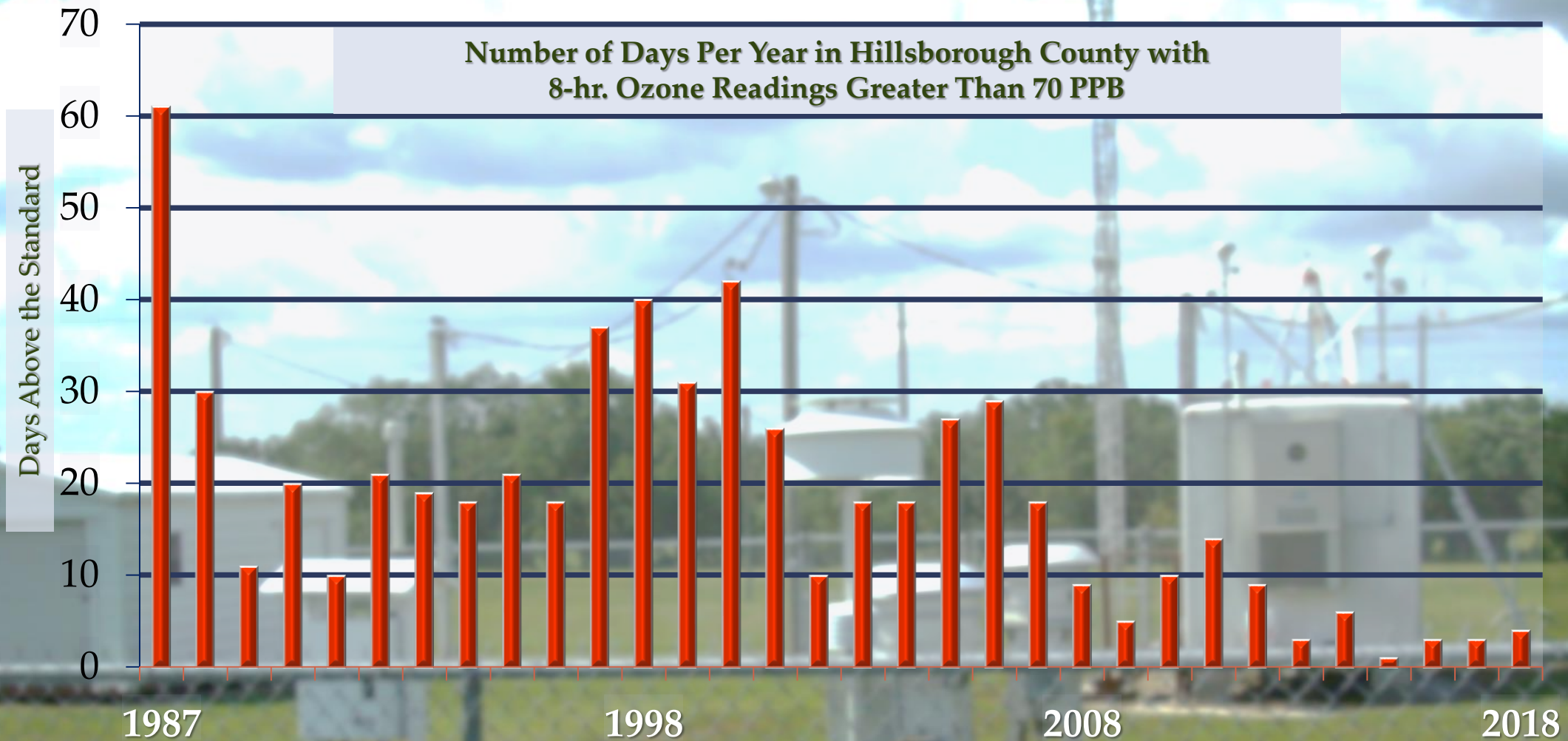


Illegal open burning



Illegal dumping of solid waste

Air Quality

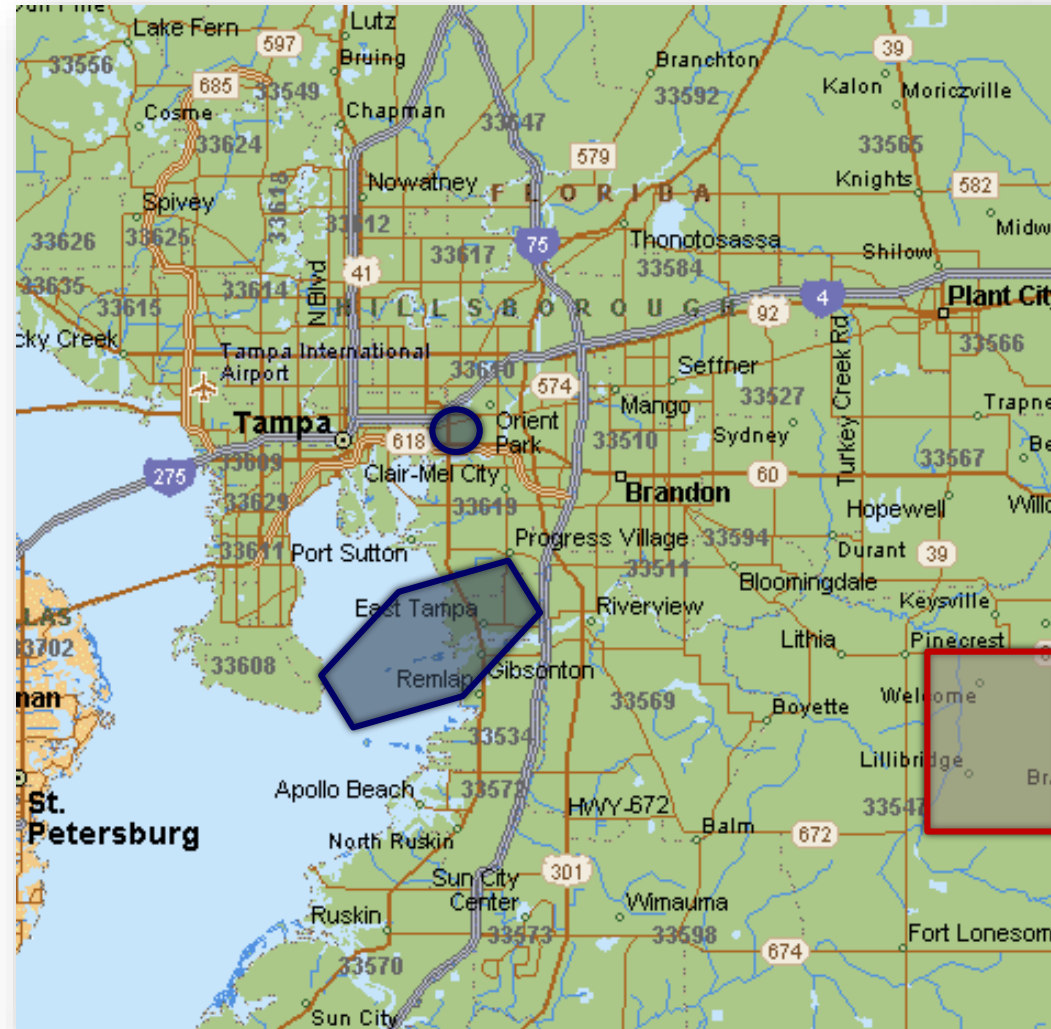


Air Quality Nonattainment Areas

Soon to be
re-designated as
meeting standards for
Lead and Sulfur
Dioxide



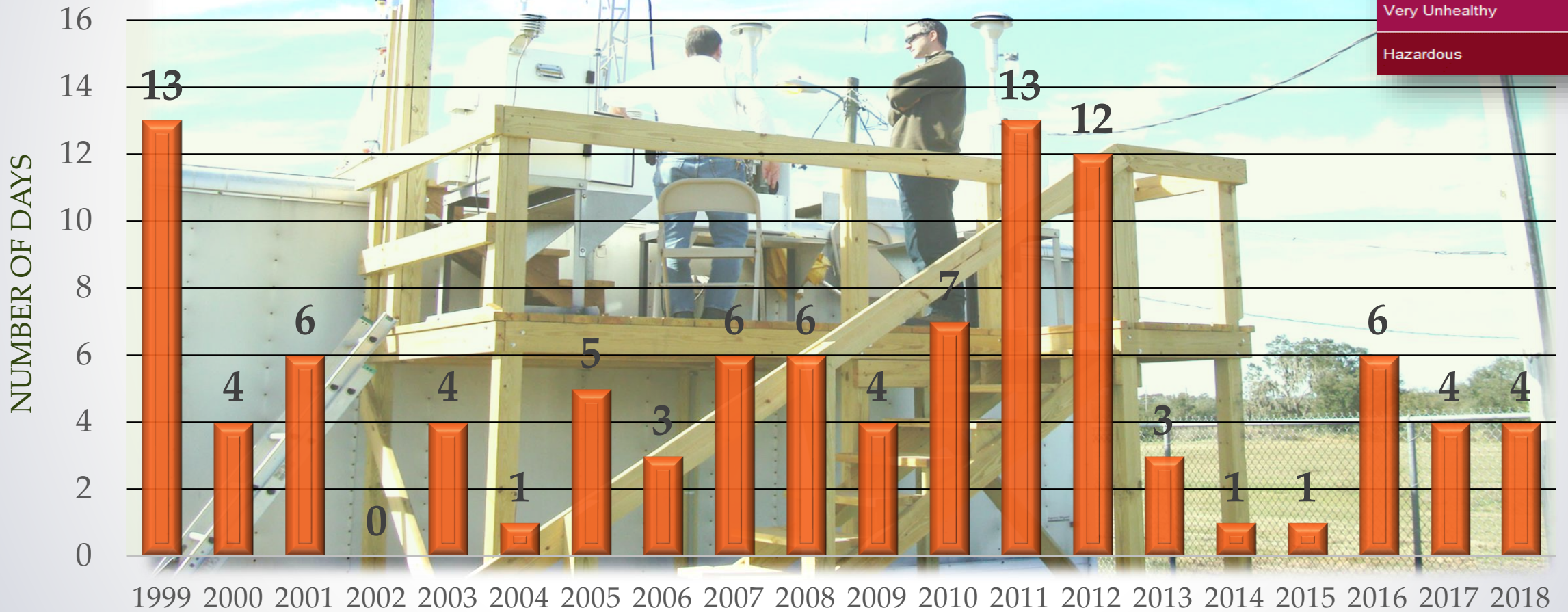
Newly designated as
failing to meet
standards for Sulfur
Dioxide



Air Quality

Number of *Unhealthy* Air Quality Days for *Sensitive Groups* in Hillsborough County

Air Quality Index Levels of Health Concern	
Good	0-50
Moderate	51-100
Unhealthy for Sensitive Groups	101-150
Unhealthy	151-200
Very Unhealthy	201-300
Hazardous	301-500



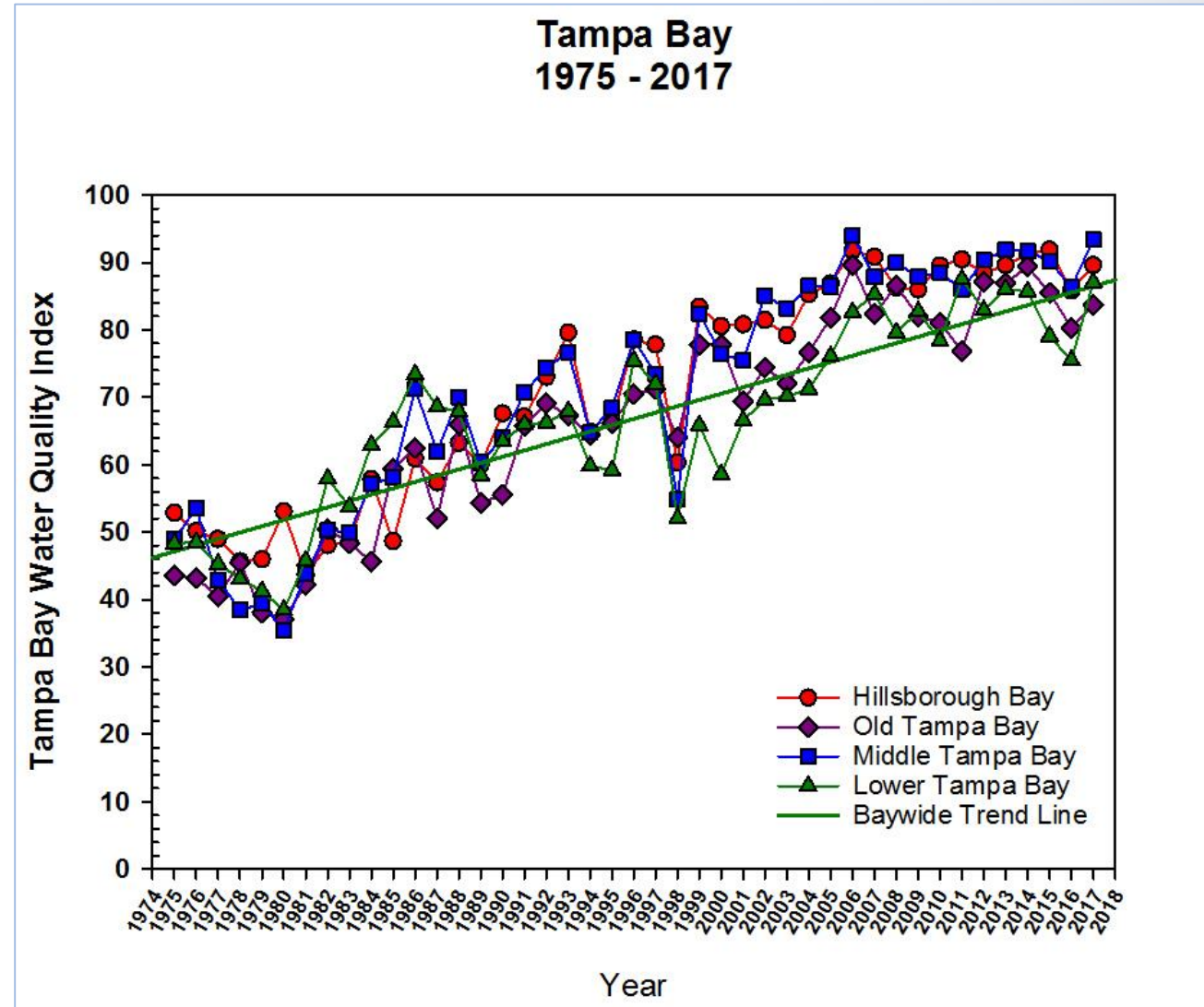
Bay Segment Report Card



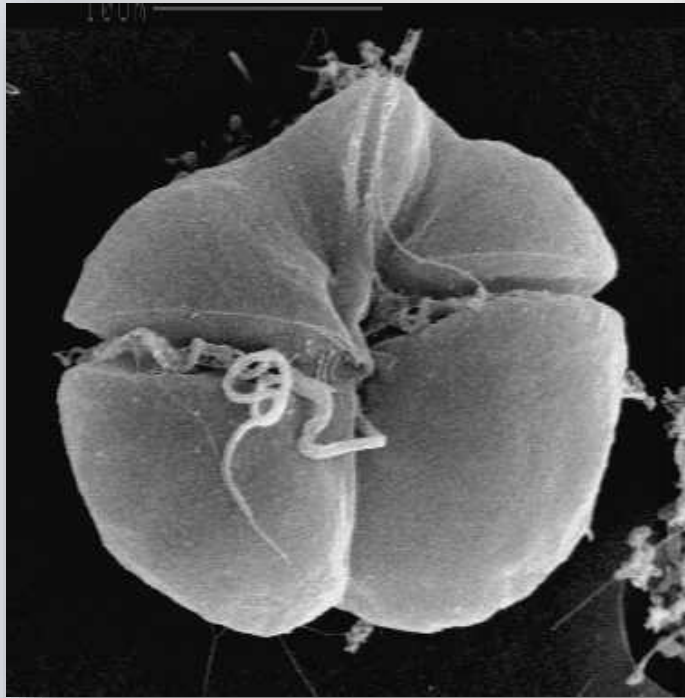
Water Monitoring

YEAR	HILLSBOROUGH BAY	OLD TAMPA BAY	MIDDLE TAMPA BAY	LOWER TAMPA BAY
2017	96.19	86.77	97.38	90.28
2016	85.95	80.36	86.31	75.50
2015	91.90	85.52	90.24	79.10
2014	91.27	89.42	91.67	85.71
2013	89.64	86.97	91.87	86.11
2012	88.45	87.24	90.38	82.94
2011	90.48	76.92	85.69	87.53
2010	89.64	81.08	88.49	78.37
2009	85.97	82.01	87.88	82.74
2008	86.31	86.57	89.98	79.62
2007	90.83	82.40	87.85	85.33
2006	91.79	89.62	93.95	82.64
2005	86.90	81.94	86.51	76.09
2004	85.32	76.64	86.61	71.23
2003	79.24	72.04	83.09	71.29
2002	81.63	74.56	85.12	69.68
2001	80.83	69.40	75.50	66.59
2000	80.60	77.85	76.43	58.14
1999	84.08	76.37	80.93	65.74
1998	60.99	63.98	55.19	46.75
1997	77.94	72.94	73.56	62.65
1996	80.84	72.20	82.88	73.60
1995	67.70	66.95	69.85	59.03
1994	64.27	65.21	65.61	52.19
1993	79.62	67.36	76.70	67.95
1992	73.06	69.16	74.43	66.28
1991	67.14	65.81	70.72	66.03
1990	67.64	55.56	63.97	63.54
1989	60.00	54.39	60.42	58.45
1988	63.23	66.01	70.07	67.89
1987	57.38	52.05	61.92	68.61
1986	60.93	62.48	71.26	73.41
1985	48.67	59.44	58.13	66.34
1984	57.86	45.62	57.02	62.93
1983	49.63	48.41	50.00	53.82

Water Quality Index (WQI) Trends



Florida Red Tide



Karenia brevis

EPC of Hillsborough County Red Tide Update 9/24/18



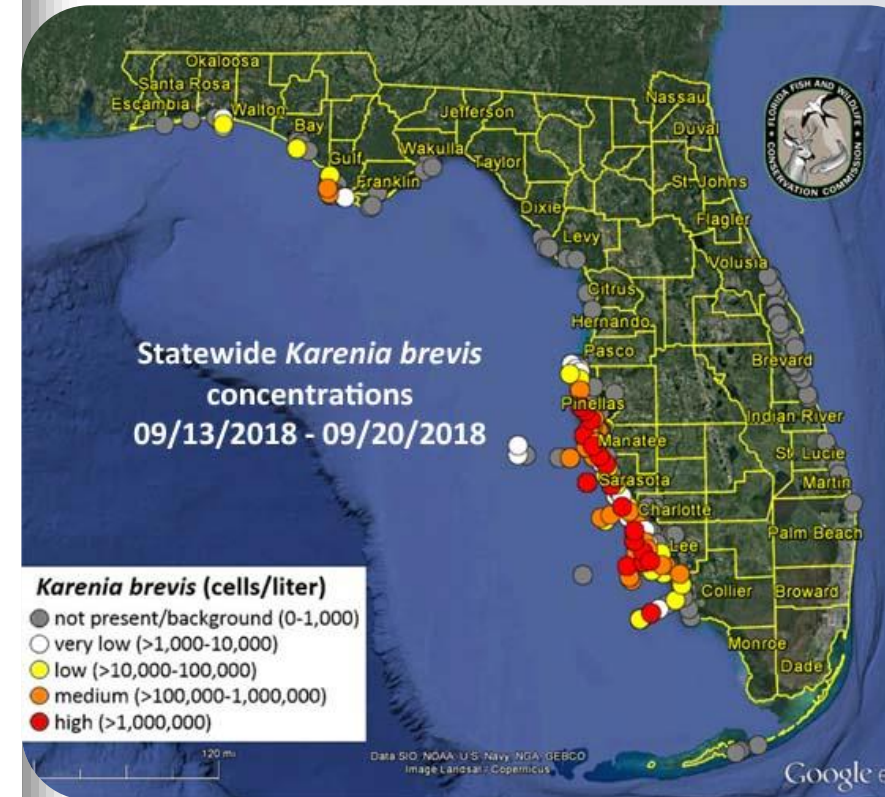
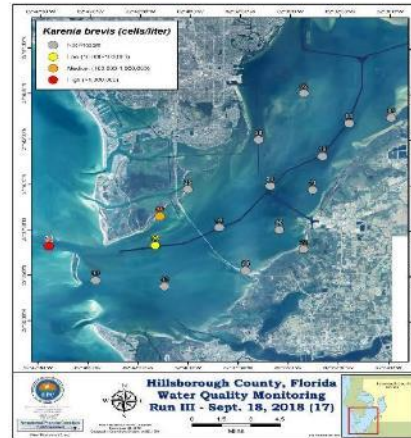
The following is a synopsis of Red Tide monitoring performed by EPC & Hillsborough County staff from 9/18/18 to 9/24/18:

Karenia: High concentrations of *K. brevis* were observed in one of the 22 samples collected in this reporting period. This one sample was collected approximately 1 mile WNW of Egmont Key. Low to medium concentrations were observed in 4 samples collected at or just south of the Sunshine Skyway Bridge.

Fish Kills: Boating observations and over-flights of Hillsborough County waters have shown few dead fish floating near or North of the Skyway. Higher concentrations of fish have been observed closer to Egmont Key.

The bulk of the fish were older kills that likely drifted into Tampa Bay from the Gulf and most were smaller baitfish (Pinfish, Mojarras, etc.) with occasional larger gamefish (Redfish, Grouper, etc.)

Discolored Water: There was no discernable water discoloration within the Bay during this reporting period. Water clarity was generally typical for this time of year.



Karenia brevis (cells/liter)

- not present/background (0-1,000)
- very low (>1,000-10,000)
- low (>10,000-100,000)
- medium (>100,000-1,000,000)
- high (>1,000,000)

● high (>1'000'000)

● medium (>100'000-1'000'000)

● low (>10'000-100'000)

○ very low (>1'000-10'000)

○ not present/background (0-1'000)

Petroleum Program

- 900 storage tanks facility compliance inspections in FY18
- 1,538 contaminated sites cleaned/closed since Petroleum Cleanup Program inception



- 888 contaminated petroleum sites remaining
- EPC manages the petroleum programs in both Hillsborough and Manatee Counties

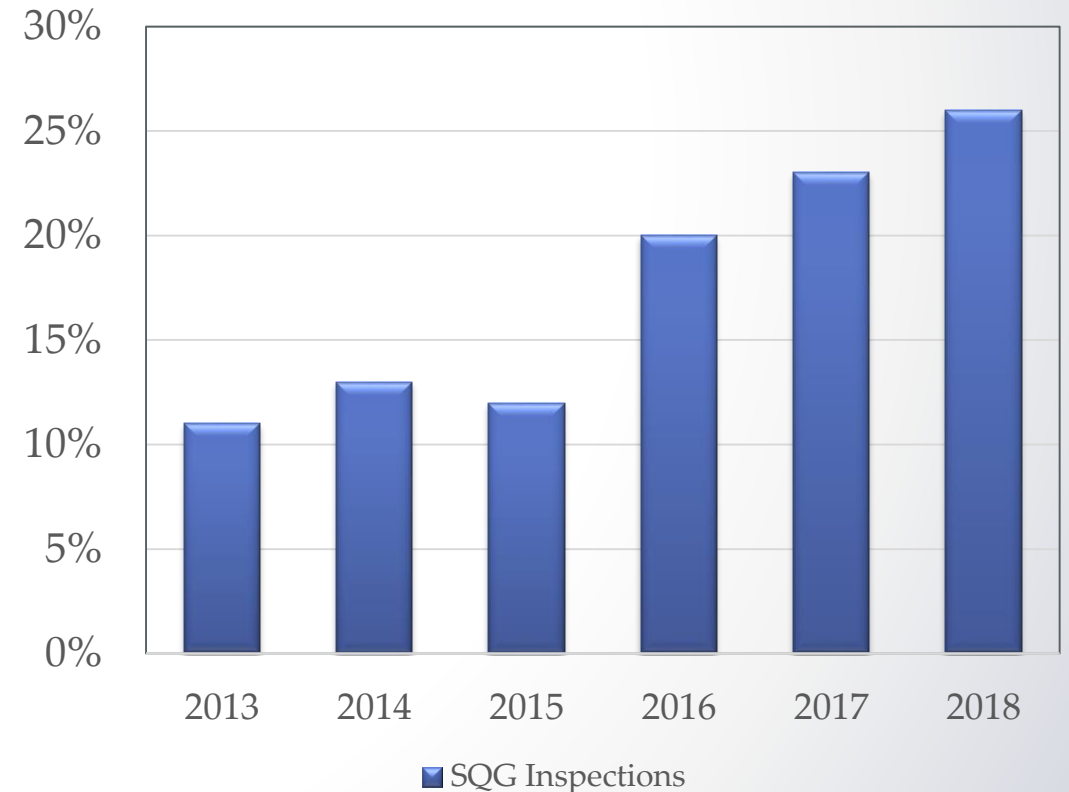
Small Quantity Generator (SQG) Program

Groundwater is Florida's primary source of potable water



SQG Inspection

Percent of businesses in the SQG Program that were provided with Compliance Assistance



Brownfields Program



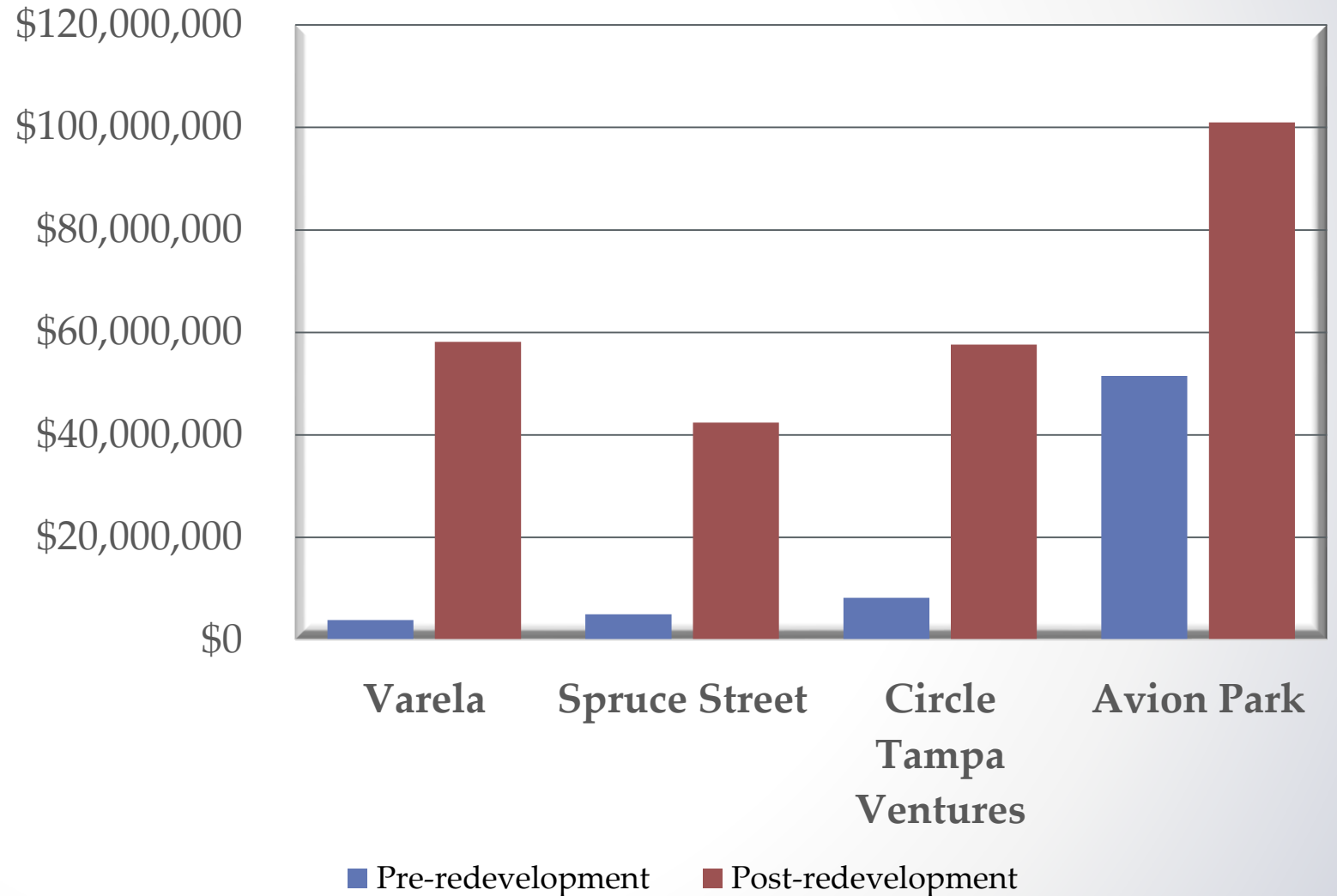
Tampa Armature Works

Before



After

Property Values



Old Landfill Redevelopment Program



Before



After

Cumulative Redevelopment

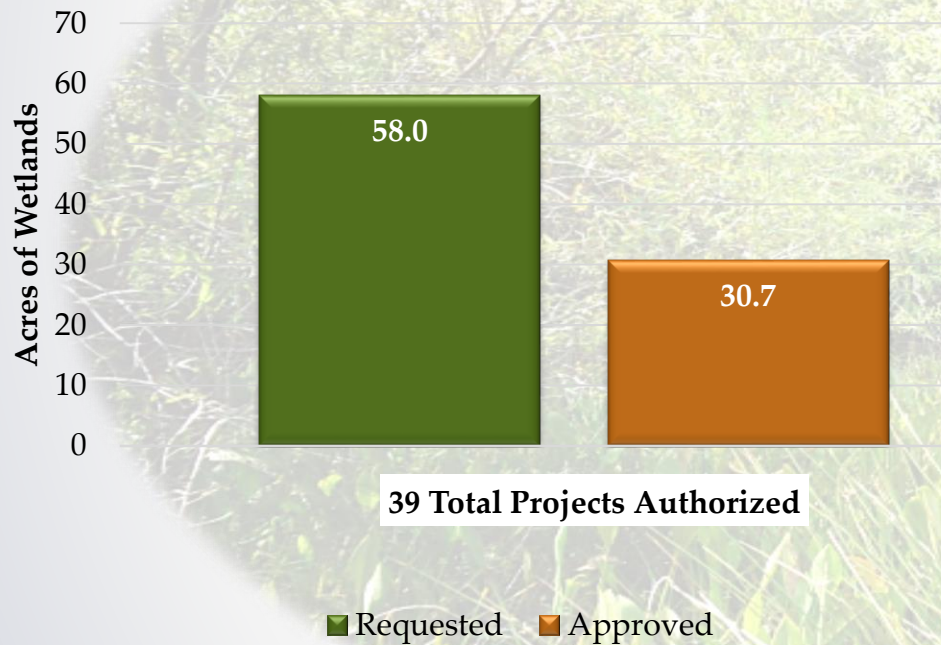


Since 1999, 99 Old Landfill Redevelopment Projects have been completed

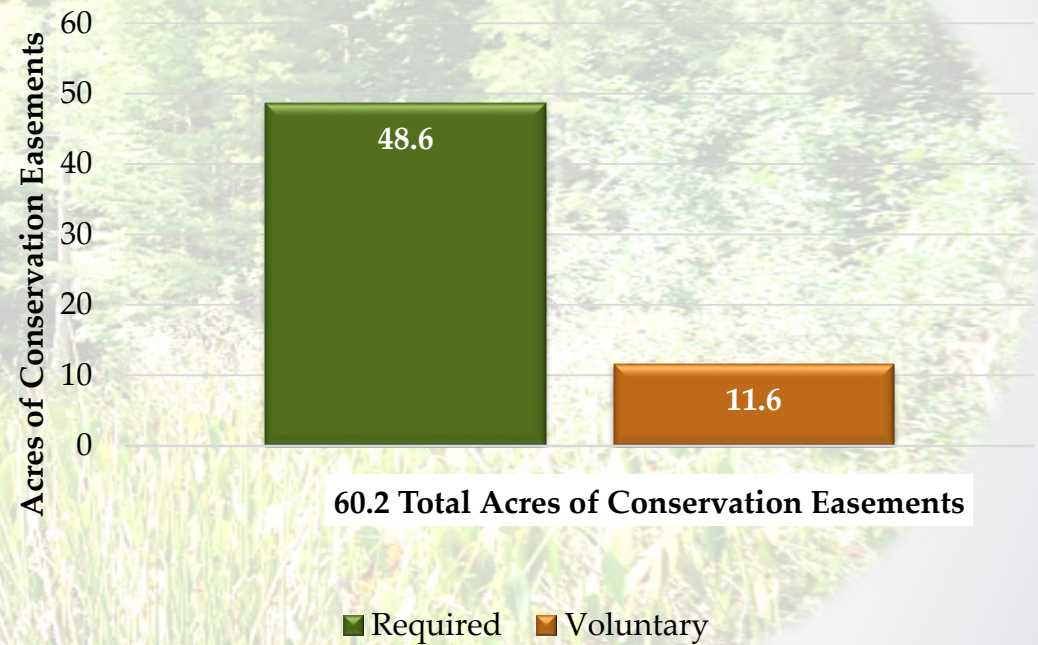
Wetland Protection

Less Impact and More Conservation

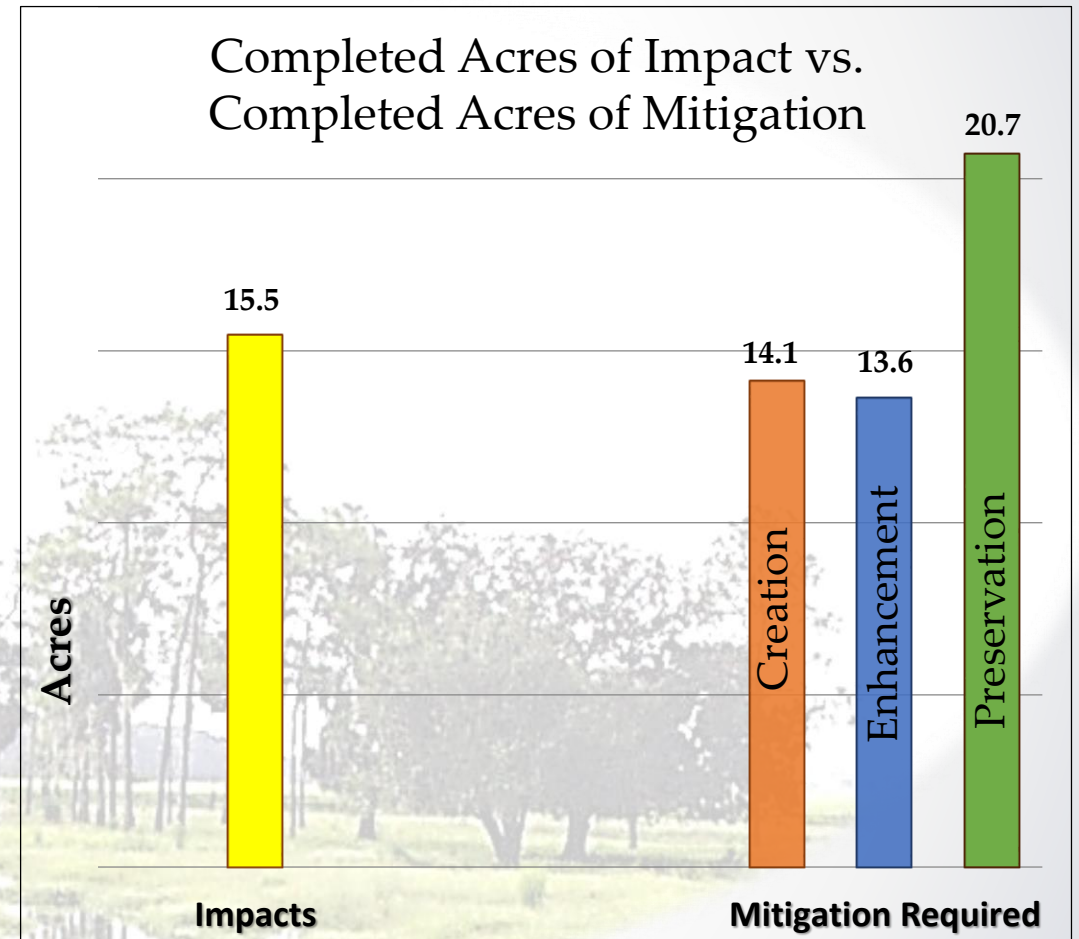
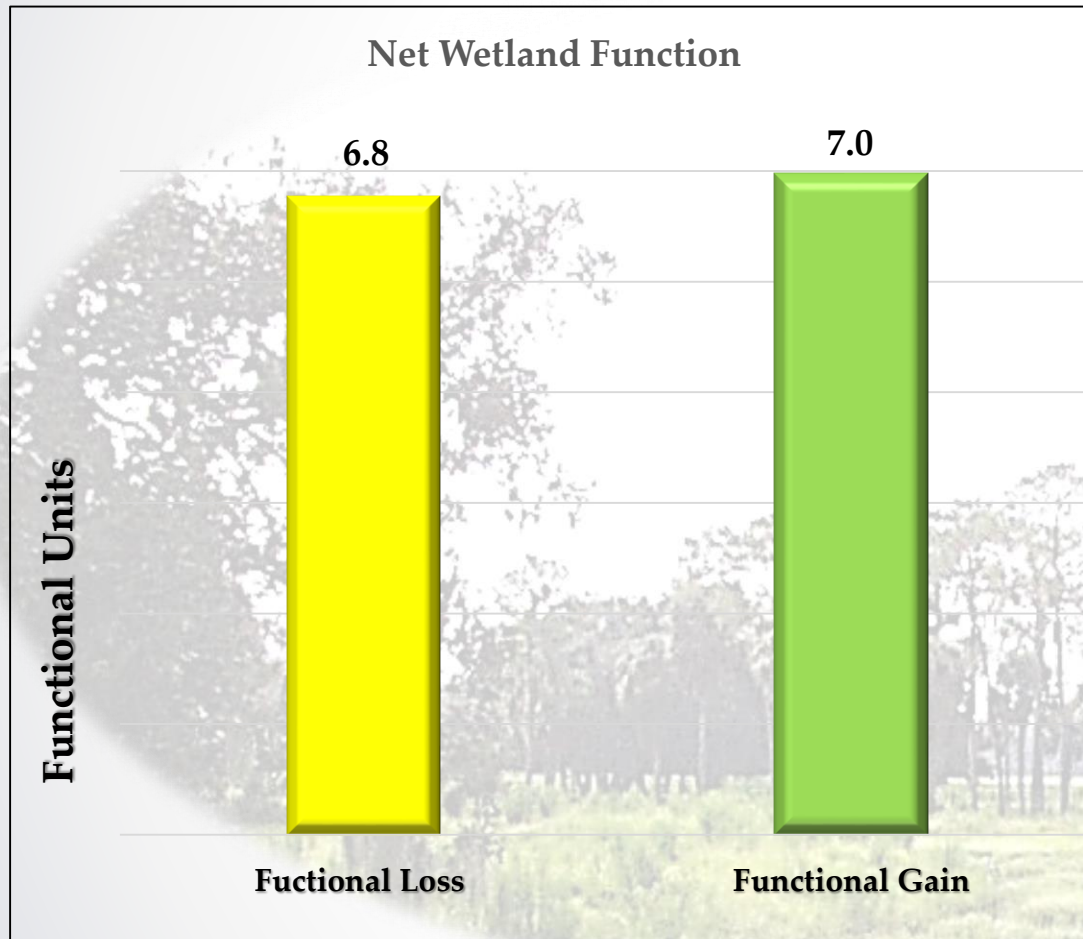
**Wetland Impacts
Requested vs Approved
9/1/2017 to 8/31/2018**



**Conservation Easements
Required vs. Voluntary
9/1/2017 to 8/31/2018**



Wetland Mitigation



One-Stop Permitting (340 Permits for FY18)

1 Application
Submittal and Fee



1 Permit



4 Application
Submittals

4 Reviews



US Army Corps
of Engineers



Additional 150+ Permits Issued on Behalf of at Least 2 Agencies

EPC's Office of Sustainability

- Collaboration with County Government on Energy and Sustainability Initiatives
- Alliance with Scientific Community and Partnering Organizations on Climate Adaptation and Vulnerability Assessments
- Partnerships with Private/Public Organizations to Promote Sustainable Programs
- Webpage Design and Dedication to Sustainability



Hillsborough County Solar Co-Operative Initiative

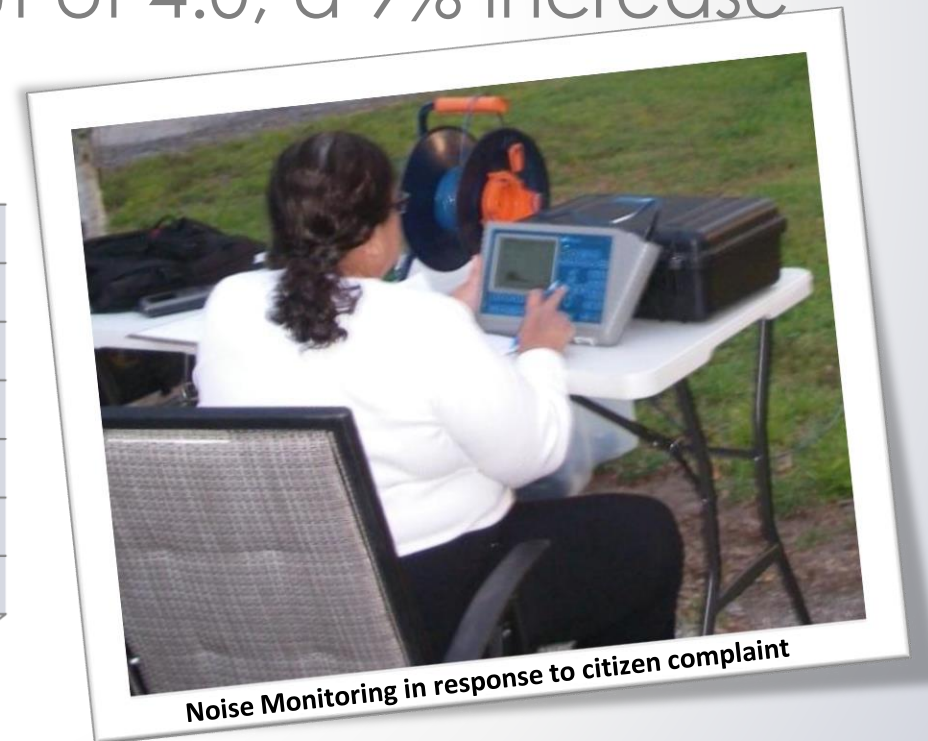
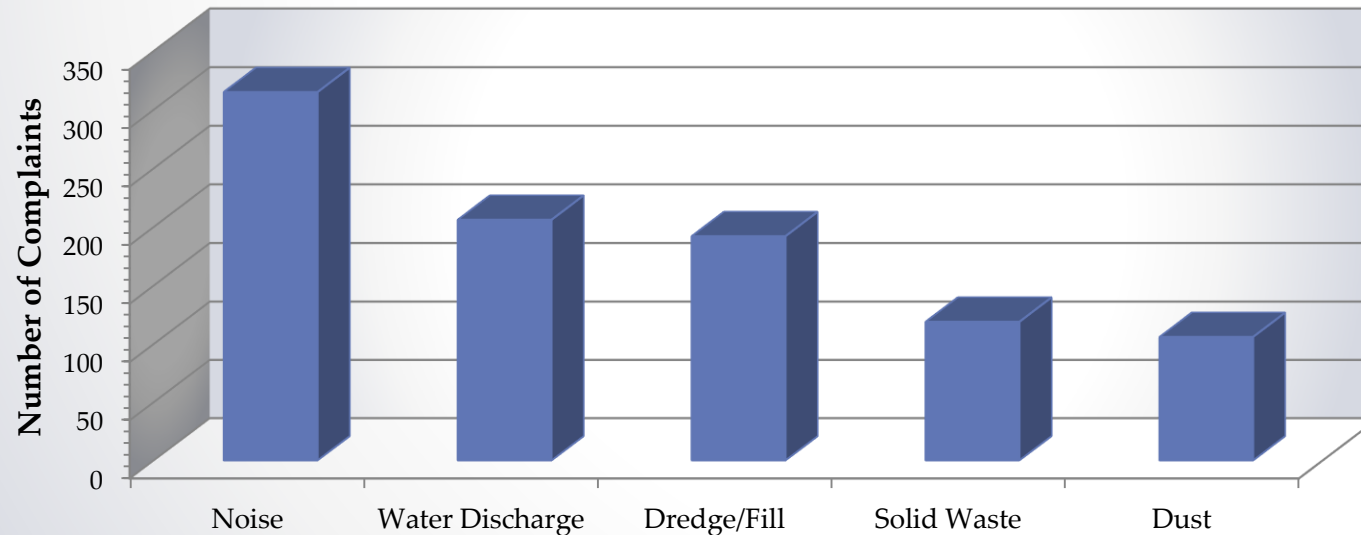
- 400 homeowners interested in solar
- 47 installed solar for an investment of over 475K
- **Economic and Environmental Benefits:**
 - \$1 million dollars invested in local economy
 - 17 million lbs. of future carbon offset



Response to Community Concerns

- EPC receives over **1,600** complaints a year
- **98%** of the time staff initiates their investigation within 3 days
- **99%** of the time complaints closed within 90 days
- Overall satisfaction rating of 3.5 out of 4.0, a 9% increase

Typical Environmental Complaint Types (FY18)



Philanthropic / Outreach Activities

Event
Stakeholders Technical Workshop
Lake Maurine MLPOA
KTBB - Gasparilla Cleanup
MathCounts Competition
Sustainability Speaker Series - Speaker Engagement
Tampa Engineers Week STEM Outreach
Hillsborough County Stem Fair
USF Engineering EXPO
Mosaic Community Advisory Panel Meeting (Radon Study)
Strawberry Grand Parade
Childrens Services Community Fair
USF Chemistry Dept - Student Research Conference
Water Works Festival
63rd Annual State Science & Engineering Fair
Stetson Earth Day
HCC Earth Day
Annual Ecofest
United Way Fundraiser
Bring Your Child to Work Day
Hillsborough 100 / Arbor Day at Yates
Natures Classroom Open House
KTBB - Lucy Dell Park Cleanup
South County Open House
17th Annual Clean Air Fair
HC Neighborhoods Conference
Wetlands Walk
FLiP Tour of EPC
Florida Key Club
Girl Scout STEM Tour
Summer Youth Camp Tour
Camp Bayou Annual Back to School Nature Event
Drive Electric Week Celebration



Executive Director's Feedback Groups

Environmental

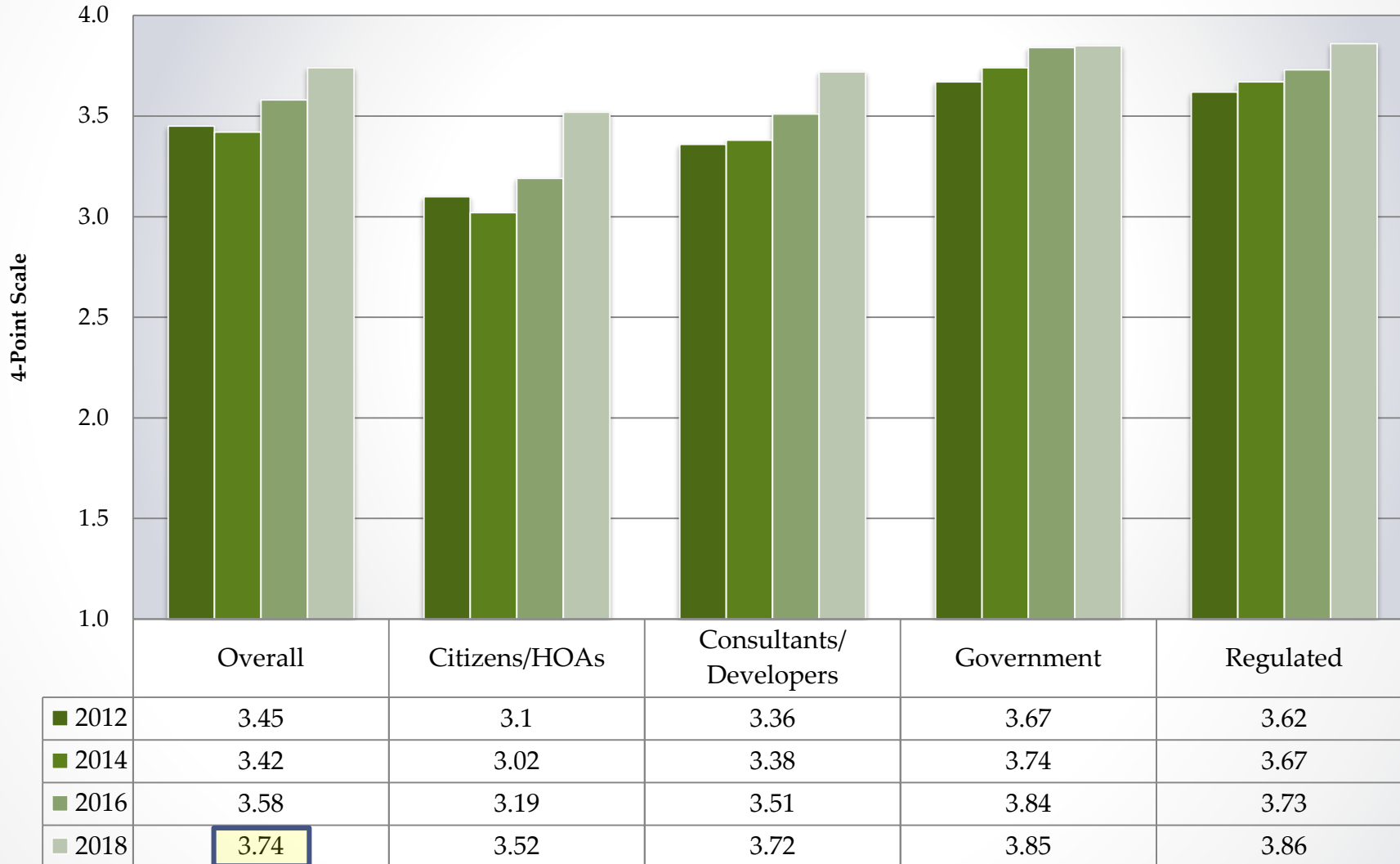


Business



EPC's Biennial Customer Survey

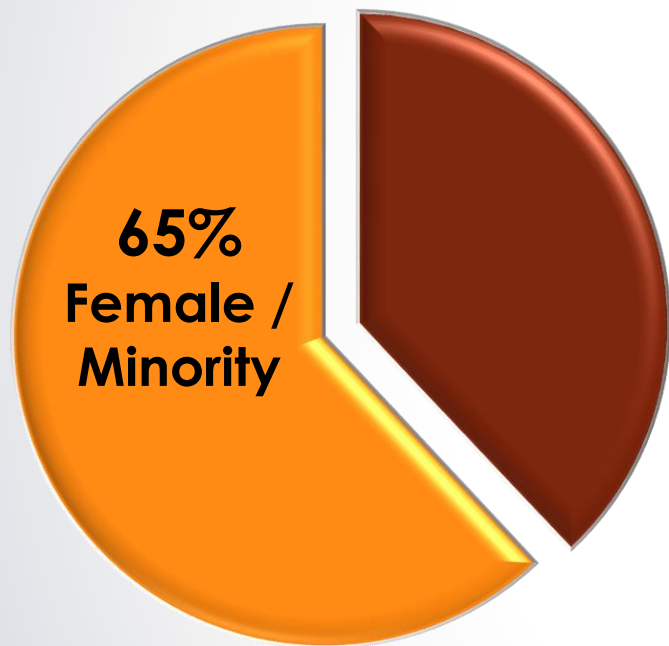
Q5 - Overall Satisfaction with EPC



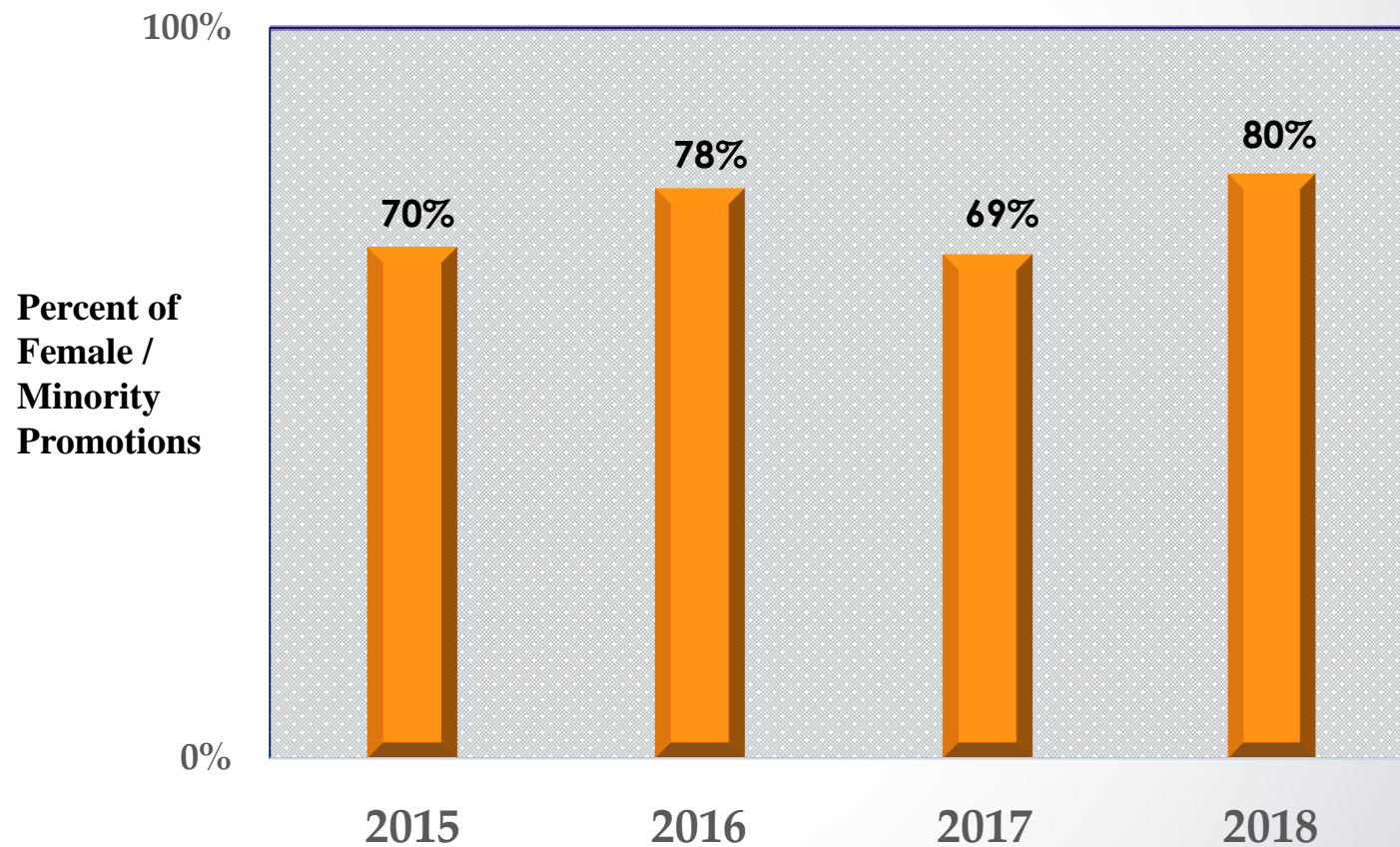
- Overall customer satisfaction is at an all-time high of 3.74 out of 4.00
- Highest overall rating in all the survey group
- 94.2% of customers surveyed rated EPC as Good/Excellent

Staff Diversity

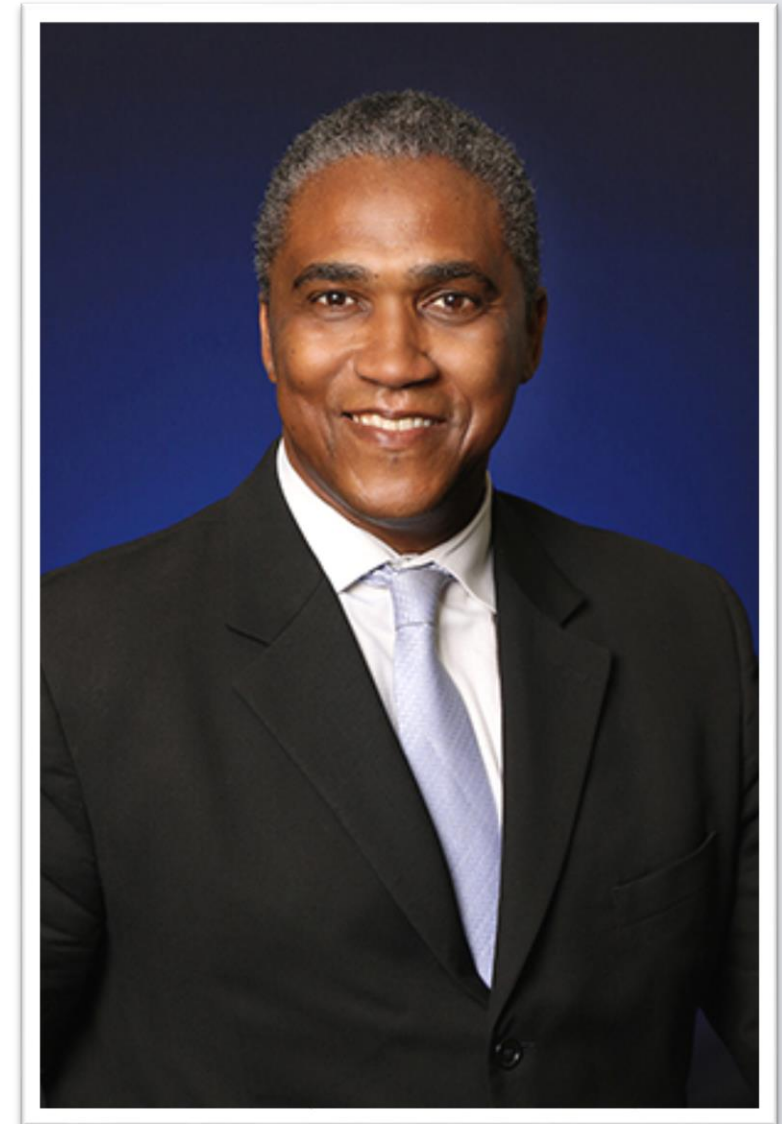
2018 EPC Staff Diversity



EPC Promotions

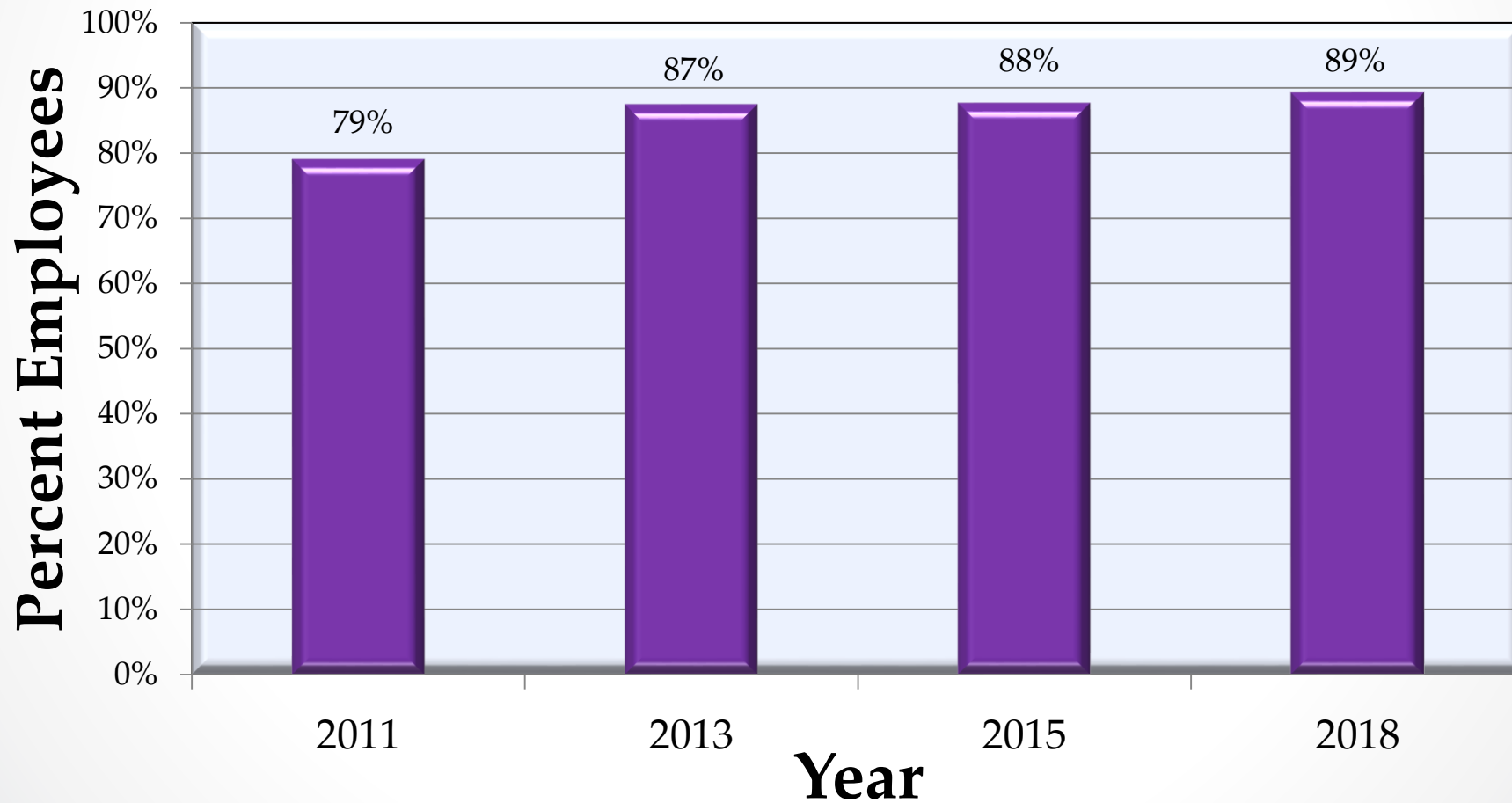


Staff Diversity



EPC Employee Survey

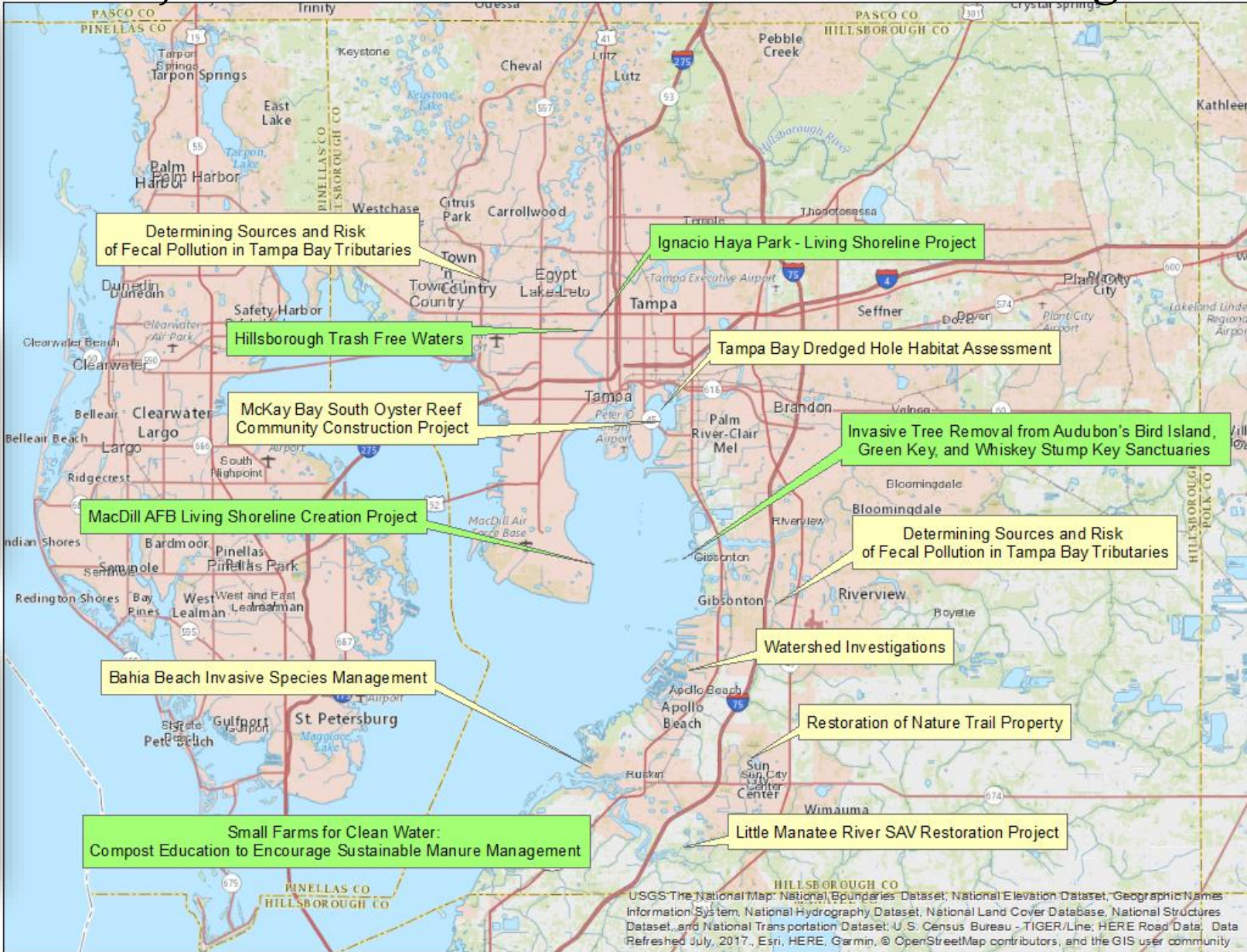
Overall Satisfaction



Staff's 2018 Goals (YTD)

Core Function	Measure	Pre-Sterling Year (2009)	2016	2017	2018 (YTD)	2018 Goal
Permitting	Average Time to Issue an Intent for State Construction Permits	57 days	17 days	16 days	17 days	Less Than or Equal to 30 days
	Average Time to Issue an Intent for Tampa Port Authority Permits	56 days	44 days	45 days	54 days	Less Than or Equal to 60 days
	Average Time EPC Permits were In-house	21 days	22 days	28 days	30 days	Less Than or Equal to 30 days
Compliance	Timely Resolution of Lower Level Non-Compliance Cases	92%	93%	85%	94%	Greater Than or Equal to 90%
Environmental Complaints	Timely Initiation of Investigation	99% in 5 Days	98% in 3 Days	98% in 3 Days	98% in 3 Days	Greater Than or Equal to 90% in 3 Days
Enforcement	Timely Initiation of Enforcement	73%	95%	100%	96%	Greater Than or Equal to 90%

2018 EPC Pollution Recovery Fund Project Locations and Select Overview Images



Watergoat collecting trash



Sampling Little Bullfrog Creek



Bahia Beach Nature Preserve



Ignacio Haya Park



Watershed Investigations



Tapegrass – Little Manatee River

Fee Amendment Highlights

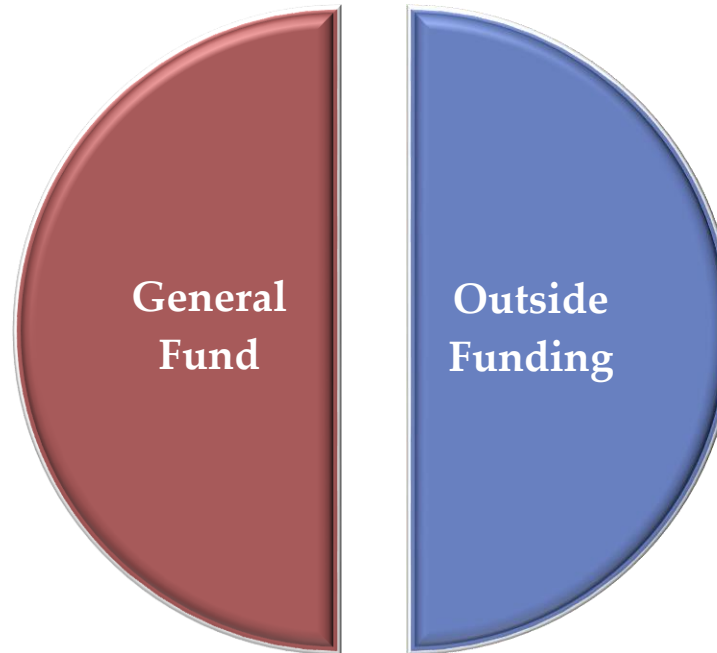


Stakeholders Technical workshop on user fees
– January 10, 2018

- Periodic Review of Fees for Full Cost Recovery
- Equitable Adjustments/Fairness
- Provided Incentives
- Established Consistency

EPC's Fiscal Prudence

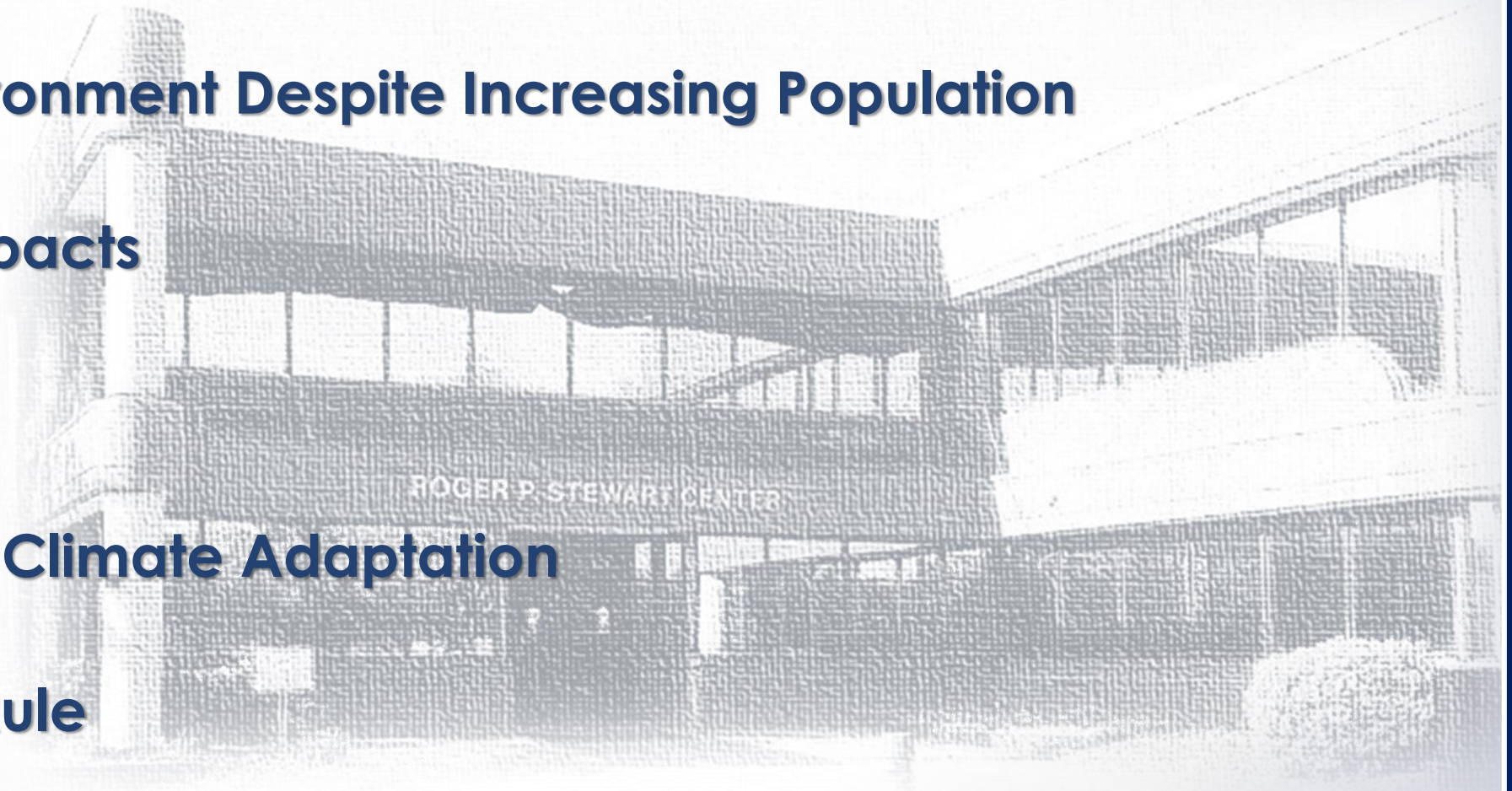
50%



EPC's 2017 Actual
Expenditures

2019 Challenges

- **Maintain Level of Service**
- **Protect the Environment Despite Increasing Population**
- **Property Tax Impacts**
- **Diversity**
- **Sea-level Rise / Climate Adaptation**
- **Support Home Rule**





2018
A YEAR IN SERVICE

Community Matters!



Community Matters!



Strawberry Festival Parade

Environment Matters!



Great America Clean Up



ECOFEST

Environment Matters!



Arbor Day Participation
With Yates Elementary

Environment Matters!



Nature's Classroom Open House



USF Engineering Expo

Students Matter!



Future Leaders in Planning



Summer Youth Camp Interns



Girl Scouts STEM Activities

Students Matter!



No Trash in Drains Initiative



STEM Fair Judging



EPC Environmental Award Winner

Giving Matters!



Camp Bayou
Back to School



Metropolitan Ministries
Backpacks of Hope



Puppies N' Cream Fundraiser

Waffles for Michael Fundraiser

Engagement Matters!



**EPC's 17th Annual
Clean Air Fair**

Partners Matter!



ELAPP



Hillsborough Solar Co-Op



General Counsel's Meeting

EPC Matters!



Future of the Region Award Winner



Wade Hopping Leadership Award



TBT Top 100 Workplaces

Thank you to the EPC Board!

