

# **2023**

# **EPC ANNUAL REPORT**



**Janet D. Lorton - Executive Director**

**October 19, 2023**



## MISSION

To protect our natural resources, environment, and quality of life in Hillsborough County.

## VISION

Environmental excellence in a changing world.

## VALUES

Environmental stewardship, integrity, transparency, and accountability.



**Janet D. Lorton**  
Executive Director

# OUR CORE FUNCTIONS

Air & Water  
Quality  
Monitoring

Pollution  
Source  
Permitting

Citizen  
Support &  
Outreach

Compliance  
Assistance

Enforcement

# WETLANDS DIVISION

Provides local standards for environmental protection, maintenance, and utilization of wetlands and other surface waters.

- Permits and Exemptions
- Delegations
- Compliance Assurance



**“Wetlands are the kidneys of our environment and natural storage reservoirs.”**

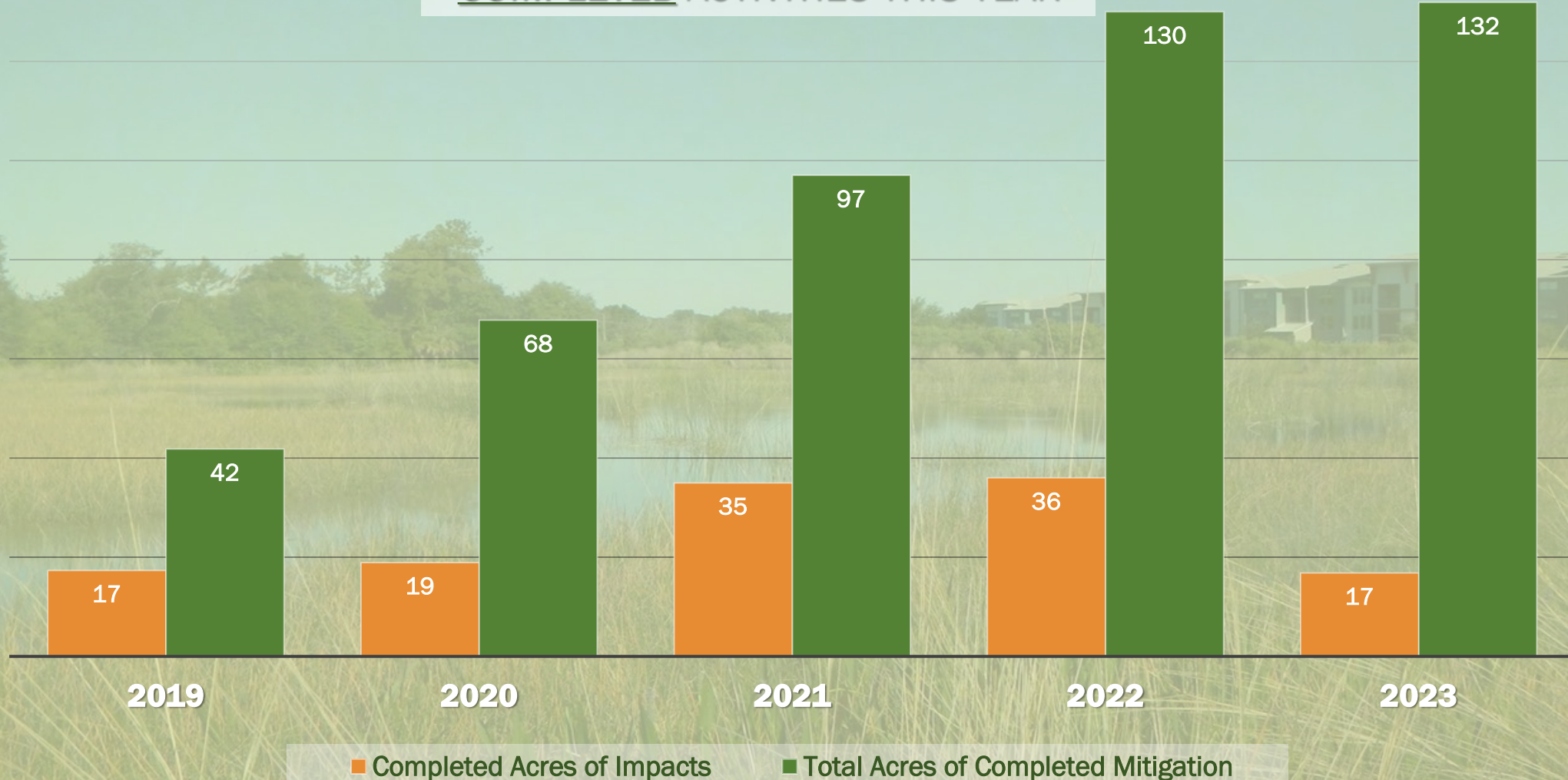
# WETLANDS REVIEWS



- Miscellaneous Activities
- Wetland Impact & Mitigation
- Complaint Investigation
- Port Authority
- Mangroves
- Development Services
- Wetland Delineation

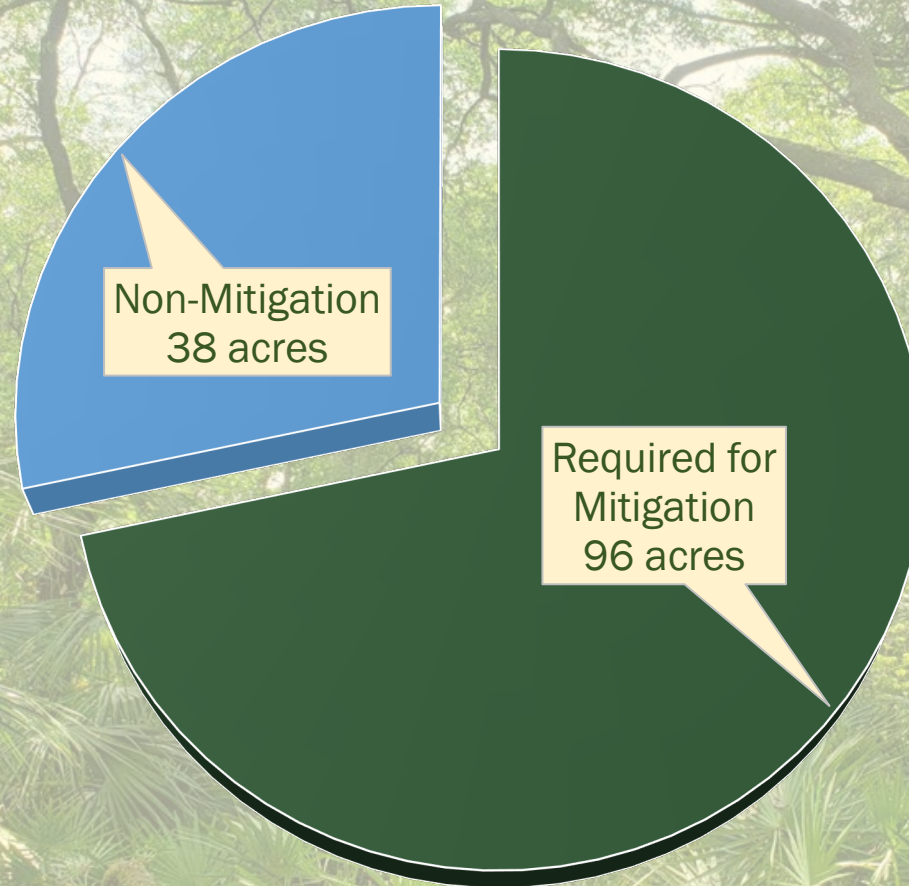
# COMMITMENT TO NO NET LOSS OF WETLANDS

## COMPLETED ACTIVITIES THIS YEAR



# CONSERVATION EASEMENTS (CE)

8/1/2022 TO 7/31/2023



**Since 2014 EPC Wetlands has received a total of 1,678 acres of CE**

# AIR DIVISION

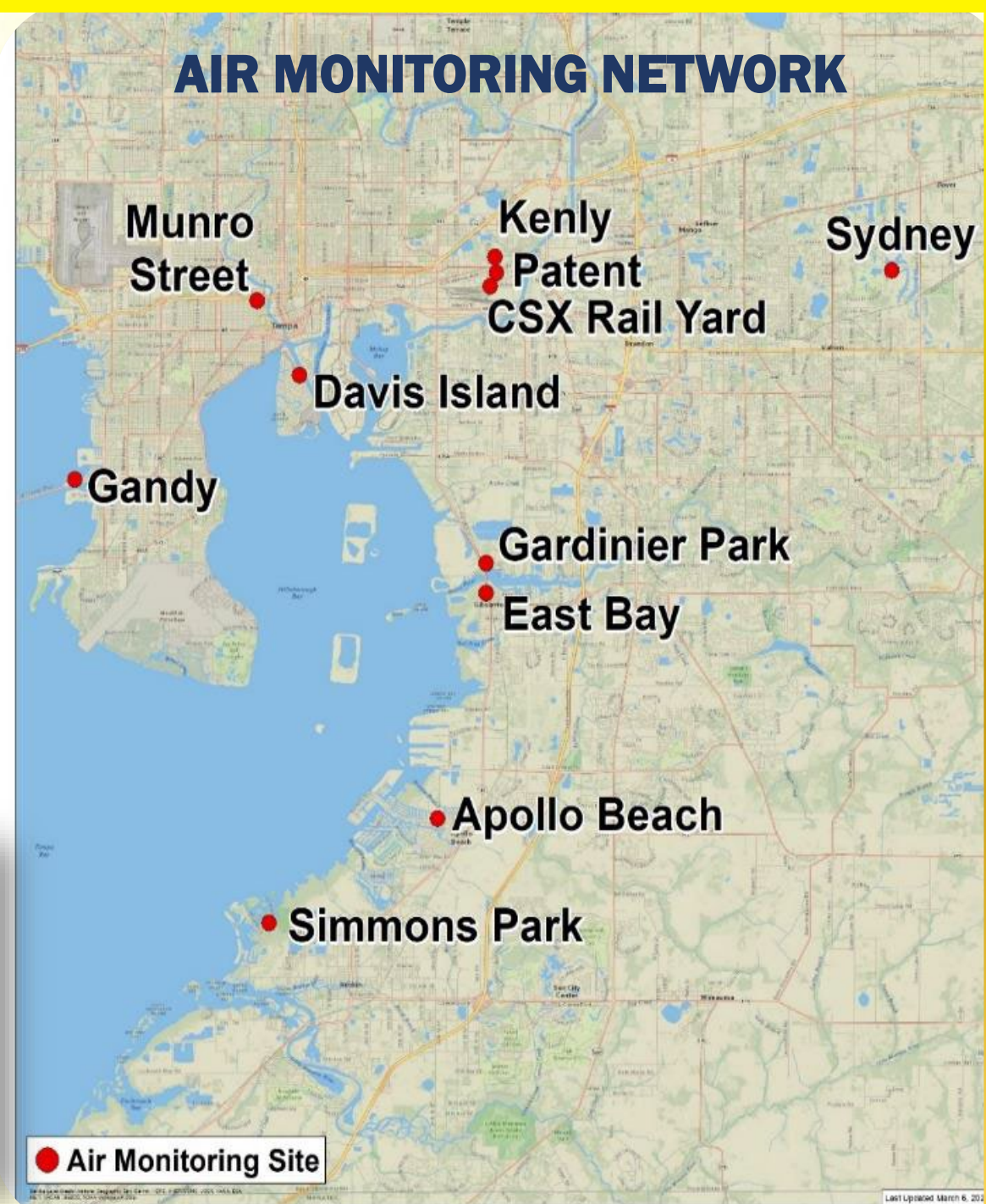
Responsible for protecting the environment, and the health and safety of the public, as they relate to air quality.

- Permitting
- Open Burning
- Compliance
- Air Monitoring
- Noise
- Asbestos



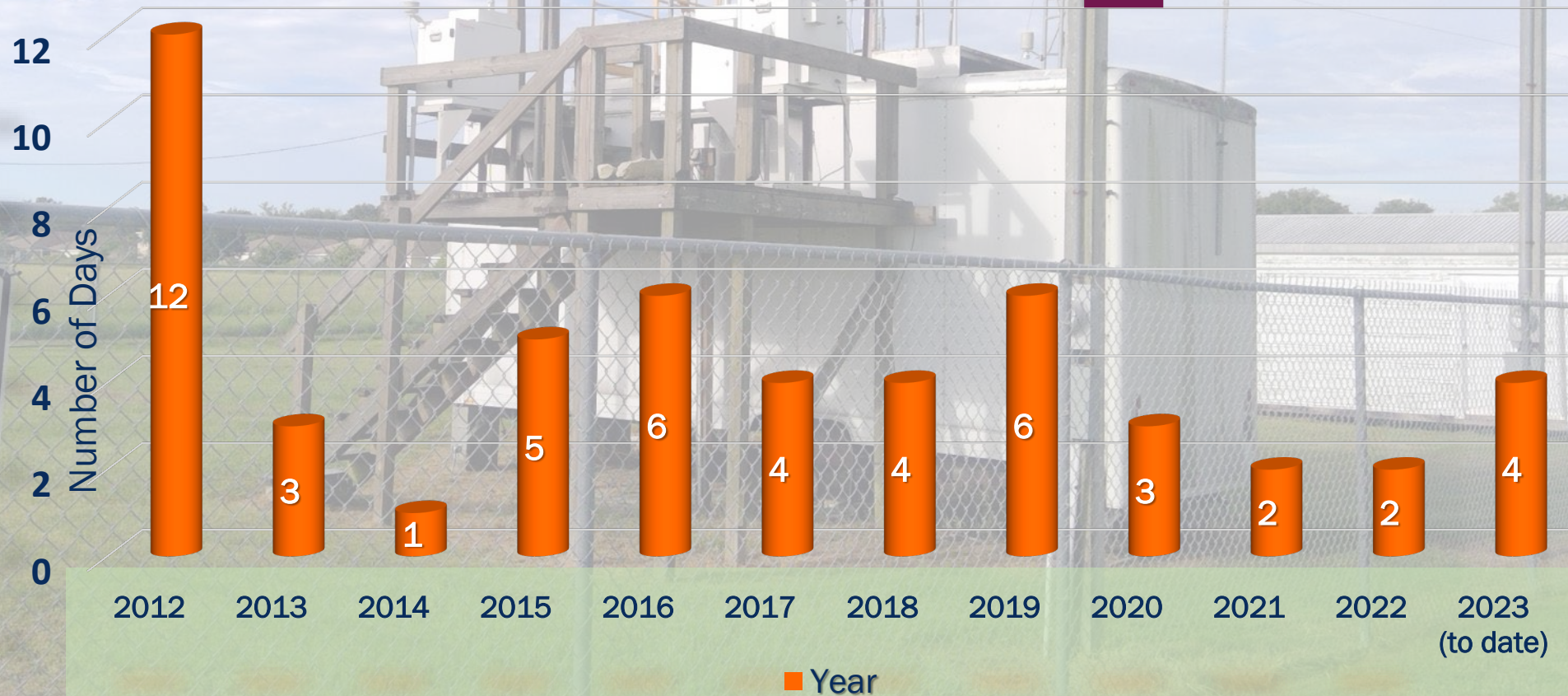


# Meeting 100% Federal Air Quality Standards



# AIR QUALITY INDEX (AQI)

## Number of **Unhealthy** Air Quality Days for **Sensitive Groups**



AIR MONITORING SITE  
www.epchc.org  
813-627-2600

# INDUSTRIAL AIR COMPLIANCE & PERMITTING

100% State Commitments met for FY23



# WASTE DIVISION

Ensures the responsible and proper management, disposal and recycling of solid and hazardous waste.



- State Contracted Petroleum Cleanup Program
- State Contracted Storage Tanks Compliance Program
- State Delegated Brownfields Redevelopment Program
- Solid & Hazardous Waste Permitting and Compliance Program
- Small Quantity Generator Hazardous Waste (SQG) Program



# PETROLEUM CLEANUP PROGRAM

Approximately **646** contaminated sites remain in cleanup status.

Program funded via Inland Protection Trust Fund (ITPF).



29 contaminated sites closed/completed this contract year.

1,751 sites closed/completed since program inception.

# STORAGE TANKS COMPLIANCE PROGRAM



---

EPC continues to manage programs in both Hillsborough and Manatee Counties



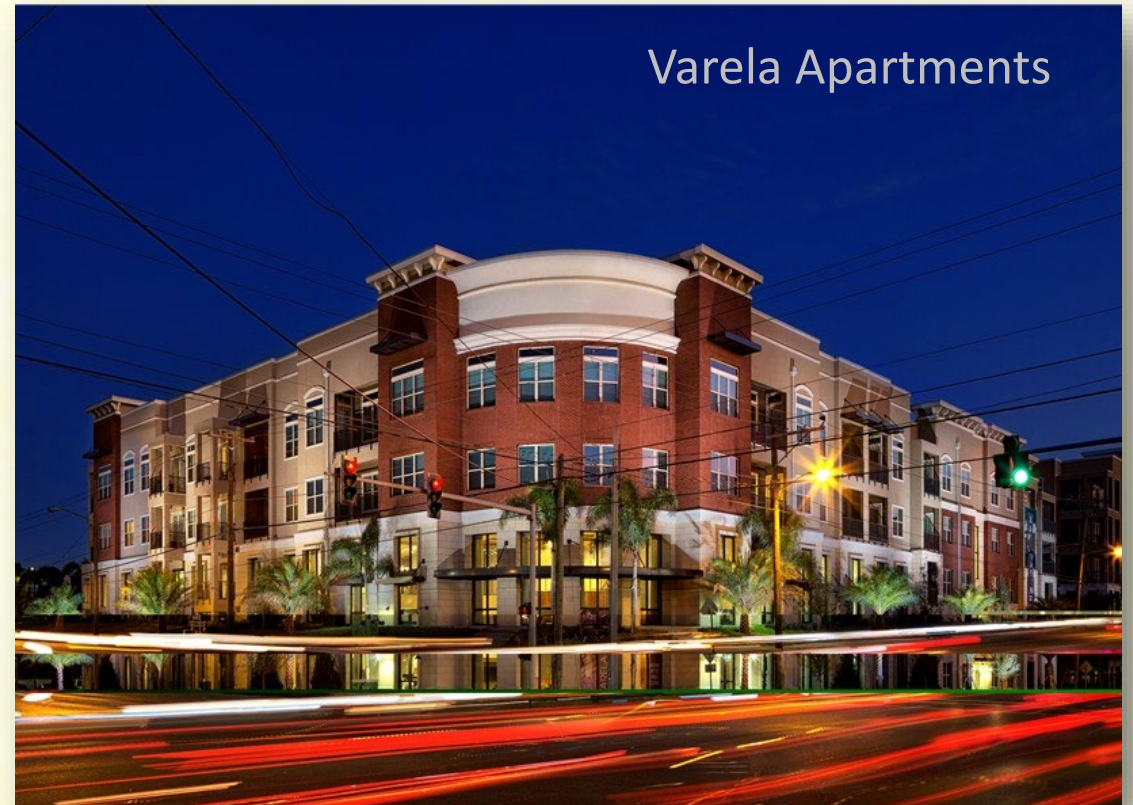
During FY 22/23  
585 compliance inspections completed at Hillsborough County facilities



During FY 22/23  
Combined total of 757 compliance and variable inspections performed

# BROWNFIELDS AND OLD LANDFILL REDEVELOPMENT PROGRAMS

- **77 Brownfield sites** in assessment, cleanup, or closure phases of redevelopment in Hillsborough County
- **\$61.6 million dollar** increase in property values over the past year from redevelopment of Brownfield Sites
- **46 Brownfield sites** are managed solely by EPC
- EPC has approved **128 old landfill redevelopment** projects, since its inception



Varela Apartments

# SMALL QUANTITY GENERATOR (SQG) HAZARDOUS WASTE PROGRAM

16,802 facilities in Hillsborough County

- Automotive Repair and Services
- Manufacturing Fabricators
- Electroplaters and Electronics Repair
- Retail, Big Box, & Department Stores
- HVAC
- Painting
- Salons
- Medical, Physicians, Dental, & Pharmacies
- Veterinarians





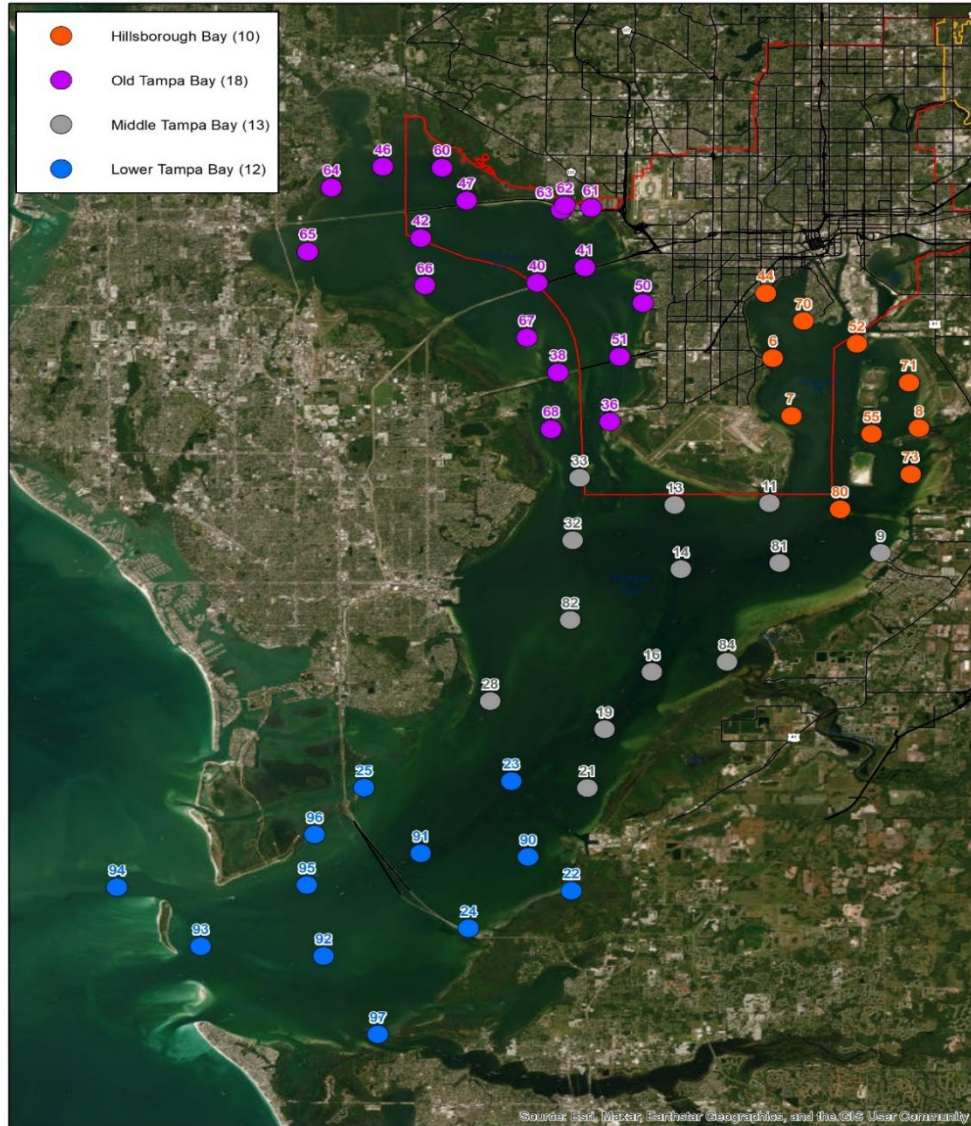
# WATER DIVISION

Protects, restores, and enhances surface and groundwater quality.

- Domestic & Industrial Wastewater
- Laboratory Services
- Artificial Reef
- Biological Monitoring
- Water Monitoring
- Seagrass Management



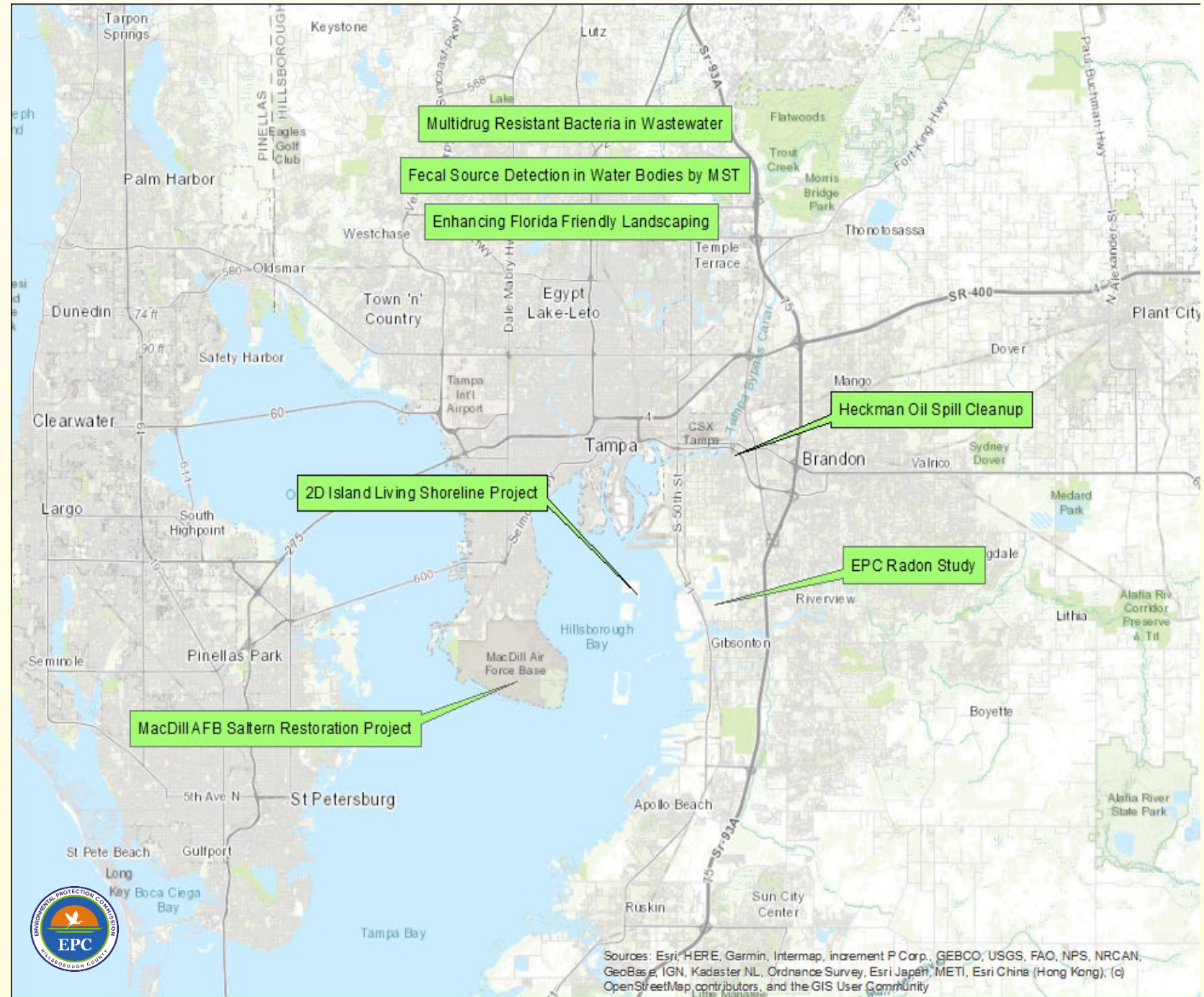
# BAY SEGMENT REPORT CARD



Year	HB	OTB	MTB	LTB	Baywide	Grade
2022	93.21	84.99	93.36	83.40	88.09	B
2021	93.33	82.58	82.84	79.96	84.10	B
2020	90.57	83.10	90.93	81.17	85.96	B
2019	92.60	85.19	93.42	83.13	88.04	B
2018	85.60	83.37	89.68	79.37	84.33	B
2017	89.64	83.80	93.41	87.10	87.89	B
2016	85.83	80.36	86.31	75.50	81.66	B
2015	91.90	85.52	90.24	79.10	86.37	B
2014	91.27	89.42	91.67	85.71	89.44	B
2013	89.64	86.97	91.87	86.11	88.42	B
2012	88.45	87.24	90.38	82.94	87.20	B
2011	90.48	76.92	86.02	87.53	84.05	B
2010	89.56	81.08	88.49	78.37	83.79	B
2009	85.99	82.01	87.91	82.74	84.30	B
2008	86.31	86.57	89.98	79.62	85.71	B
2007	90.83	82.40	87.85	85.33	85.95	B
2006	91.79	89.62	93.95	82.64	89.42	B
2005	86.90	81.86	86.51	76.09	82.57	B
2004	85.32	76.64	86.61	71.23	79.36	C
2003	79.24	72.04	83.23	70.18	75.73	C
2002	81.47	74.43	85.12	69.68	77.36	C
2001	80.83	69.40	75.50	66.59	72.54	C
2000	80.60	77.85	76.43	58.61	73.99	C
1999	83.42	77.83	82.44	65.87	78.08	C
1998	60.37	64.06	54.91	52.06	59.48	D
1997	77.82	71.23	73.49	72.03	73.52	C
1996	78.55	70.51	78.57	75.47	74.86	C
1995	66.29	66.18	68.48	59.20	65.64	C
1994	64.88	64.41	64.83	59.83	63.84	C
1993	79.62	67.36	76.70	67.95	72.18	C
1992	73.06	69.16	74.43	66.28	70.57	C
1991	67.14	65.81	70.72	66.03	67.31	C
1990	67.64	55.56	63.97	63.54	61.74	C
1989	60.00	54.39	60.42	58.45	57.85	D
1988	63.23	66.01	70.07	67.89	66.85	C
1987	57.38	52.05	62.00	68.61	59.15	D
1986	60.93	62.48	71.26	73.41	66.67	C
1985	48.67	59.44	58.13	66.34	58.49	D
1984	57.86	45.62	57.14	62.93	54.64	D
1983	48.68	48.41	50.00	53.82	50.04	D
1982	48.05	50.45	50.27	57.95	51.58	D
1981	43.63	42.18	43.82	45.78	43.65	D
1980	53.10	37.04	35.43	38.46	40.18	D
1979	45.95	38.07	39.38	41.23	40.66	D
1978	45.71	45.55	38.46	43.10	43.36	D
1977	48.99	40.48	42.91	45.31	43.92	D
1976	50.16	43.22	53.57	48.54	48.26	D
1975	52.86	43.60	48.95	48.36	47.76	D
1974	54.06	45.76	48.33	46.29	48.34	D

# 2023 EPC Pollution Recovery Fund (PRF)

- 7 projects currently open
- 3 projects county-wide
- 7 new project proposals undergoing evaluation by staff
- The PRF has provided approximately \$9 million in grant funds for over 180 environmental projects since 1987



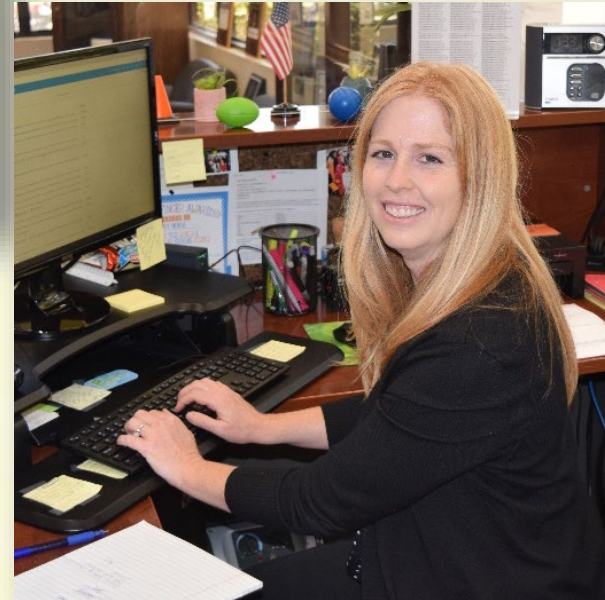
# WATER COMPLIANCE INSPECTIONS & CITIZEN RESPONSE

Reducing impacts from wastewater generators means cleaner water for today and for future generations!



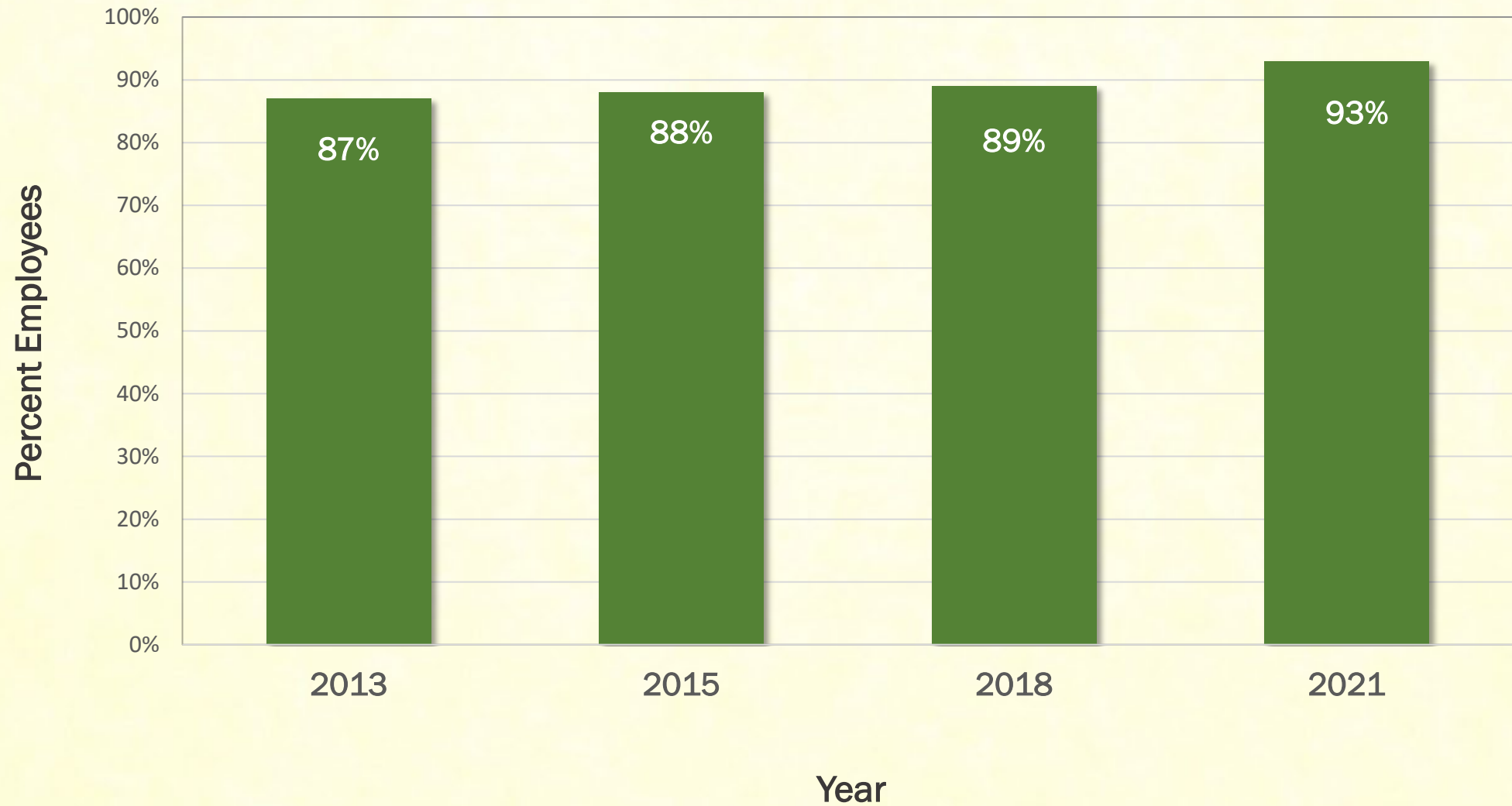
# ADMINISTRATION DIVISION AND LEGAL

Provides support for our four operational divisions and information and services to the public.



# EPC Employee Survey

## Overall Satisfaction

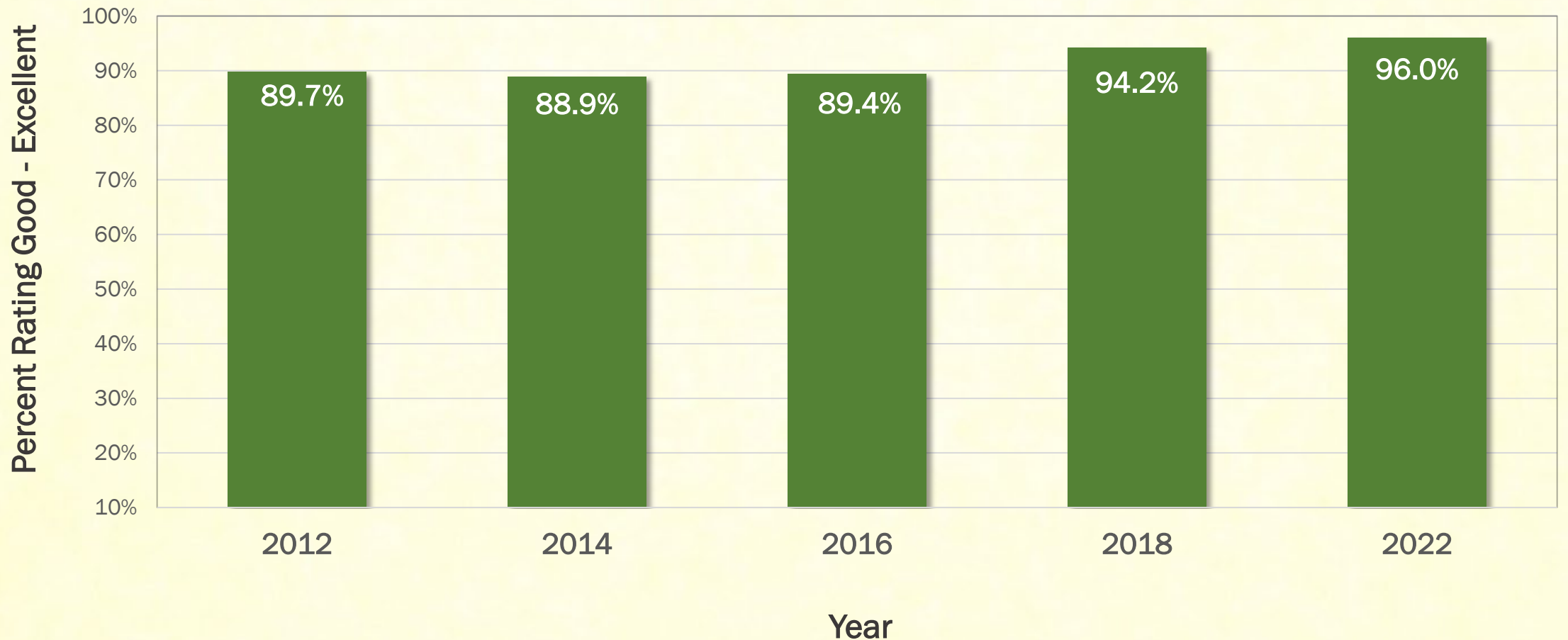


# EPC Customer Survey

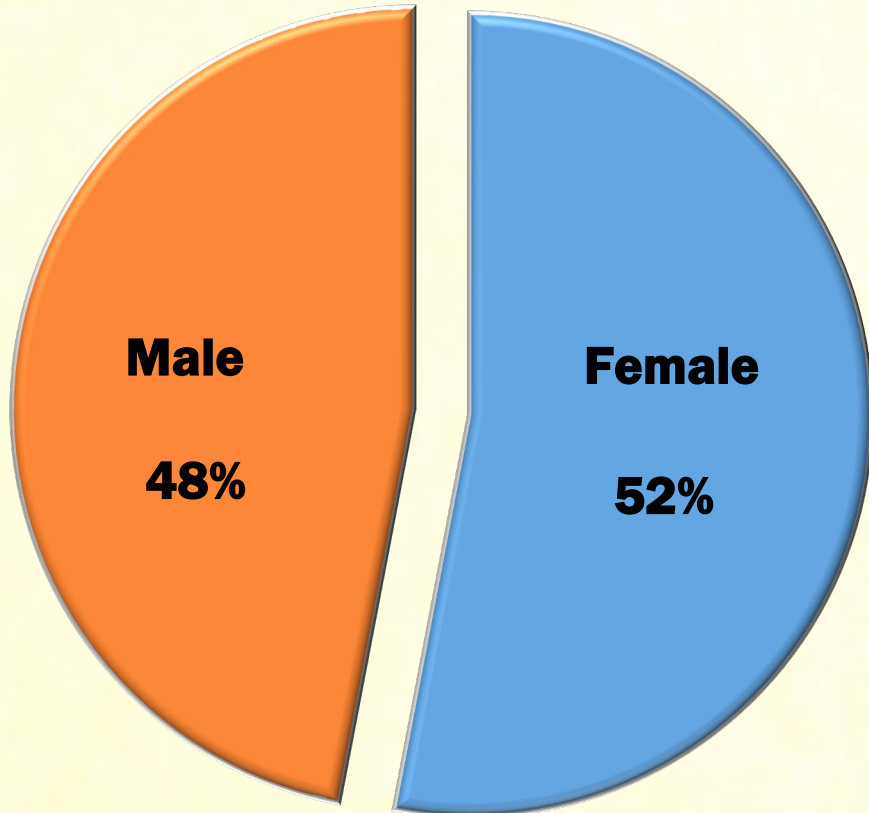


Good

## EPC Overall Customer Satisfaction Ratings: Good – Excellent



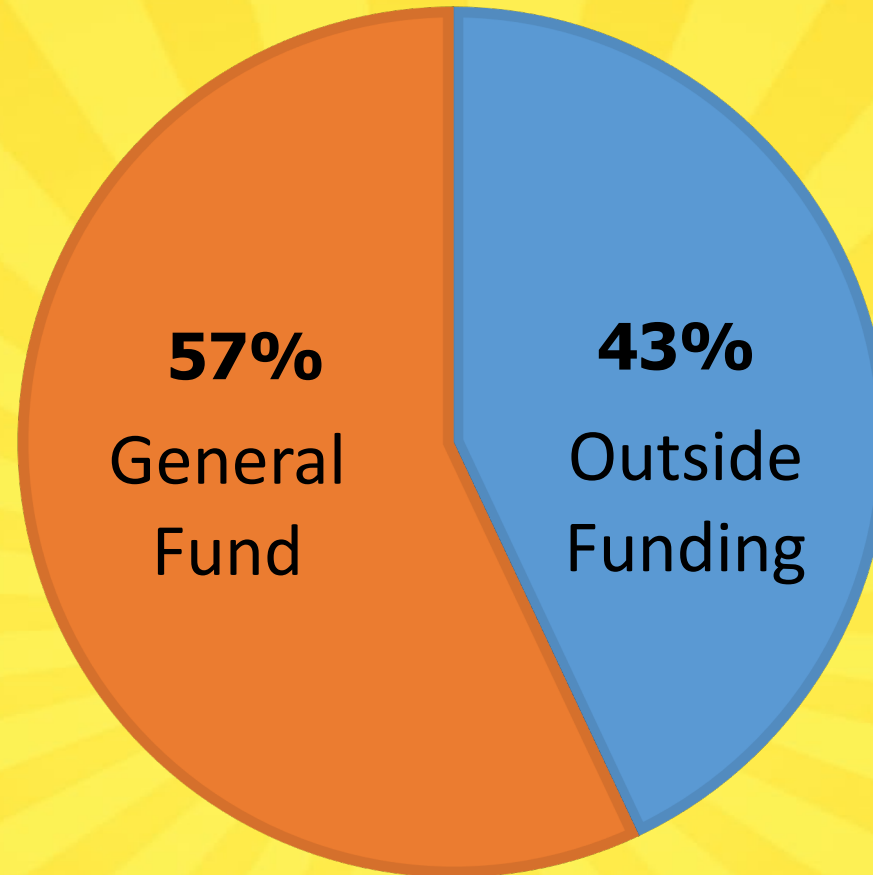
# STAFF DIVERSITY



EPC AGENCY-WIDE GENDER DATA  
SEPT 2023



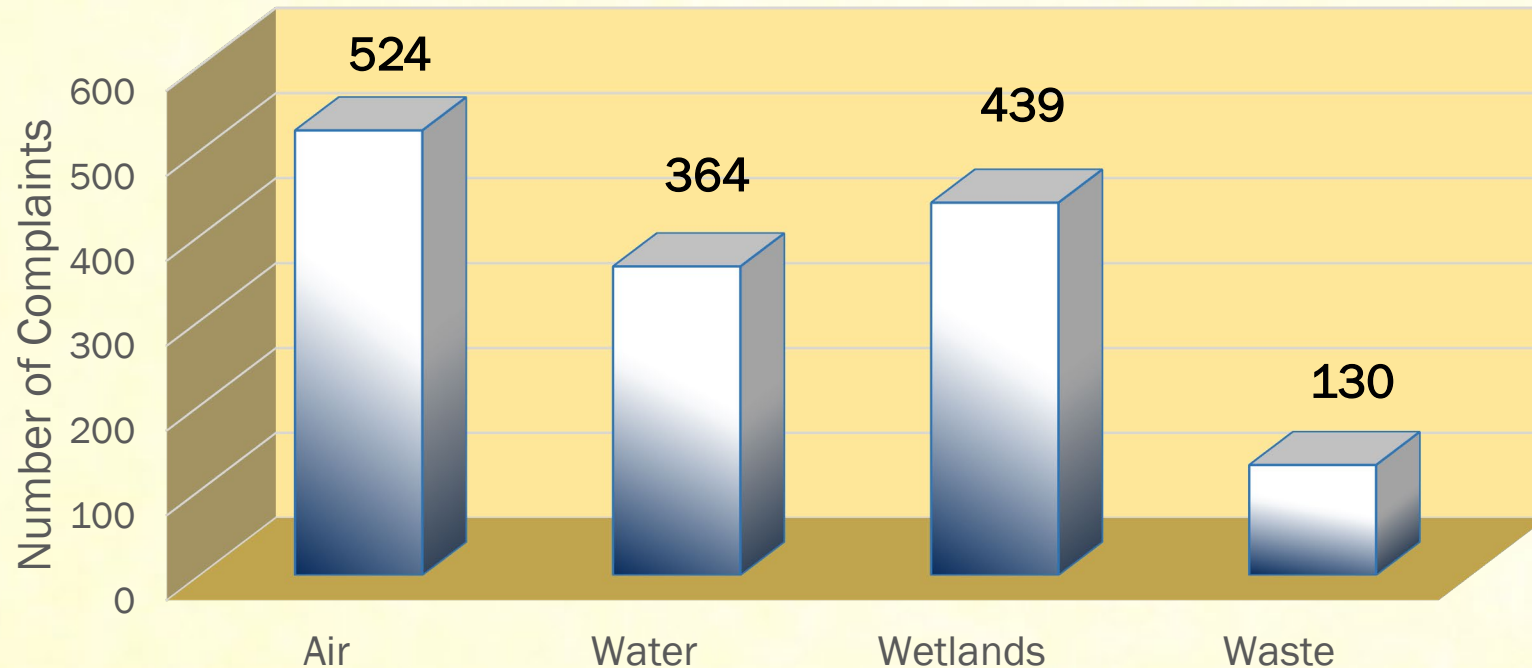
# EPC's Fiscal Responsibility



2023 Expenditures  
(Projected)

# FY23 COMPLAINTS AND AUDITS

## 2023 Complaints by Division



Total complaints:

**1,457**

3-Day response time met:

**99%**

Timely closure:

**100%**

**AUDITS: 48 TOTAL, FROM 8 AGENCIES**

# FY23 AGENCY GOALS

Core Function	Measure	2021	2022	2023	2023 Goal
Permitting	Average Time to Issue an Intent for State Construction Permits	23 days	27 days	24 days	Less Than or Equal to 30 days
	Average Time to Issue an Intent for Tampa Port Authority Permits	58 days	47 days	77 days	Less Than or Equal to 60 days
	Average Time EPC Permits were In-house	34 days	31 days	33 days	Less Than or Equal to 30 days
Compliance	Timely Resolution of Lower Level Non-Compliance Cases	93%	97%	99%	Greater Than or Equal to 95%
Environmental Complaints	Timely Initiation of Investigation	97% in 3 Days	99% in 3 Days	99% in 3 Days	Greater Than or Equal to 90% in 3 Days
Enforcement	Timely Initiation of Enforcement	98%	98%	98%	Greater Than or Equal to 90%

# SUSTAINABILITY



# EXECUTIVE DIRECTOR'S FEEDBACK GROUPS



ENVIRONMENTAL



BUSINESS

# COLLABORATION AND ENGAGEMENT

- EPC Hosted Events
  - Regional Quarterly EPA Crimes Taskforce Meetings
  - Certified Public Manager (CPM) Training
  - Statewide 2023 Fats, Oil, and Grease Conference
- EPC Rule Updates (Chap. 1-2, 1-7, and 1-10)
- Medical Equipment Sterilization Facility EPA/EPC Joint Inspection
- National “Pulitzer on the Road” Panel Discussion/Live Stream Event



# COMMUNITY OUTREACH



- Philanthropic Giving
- EPC's 20<sup>th</sup> Clean Air Fair
- EPC's 22<sup>nd</sup> Photo Contest
- Environmental Cleanups
- School and STEM Events
- Neighborhood Outreach

# CHALLENGES FOR EPC IN FY24

- Remaining competitive for retention and recruitment
- Environmental strains from population and industry growth
- Balancing environmental protection with sustainable development
- Loss of institutional knowledge
- Evolving with technological advances
- Technology/databases require increased IT applications





# EPC STAFF



# OUR COMMISSION'S SUPPORT

